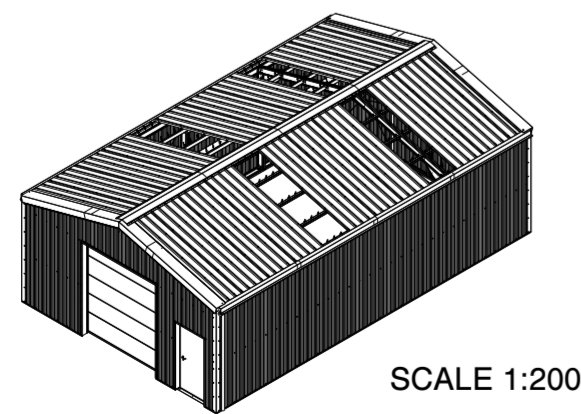
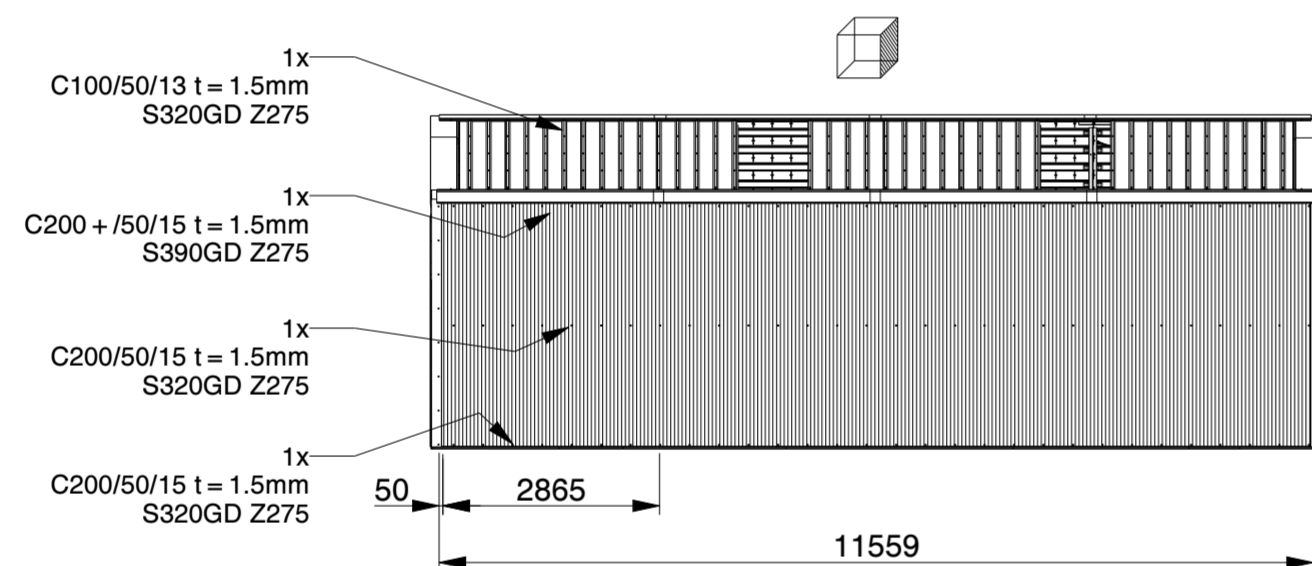
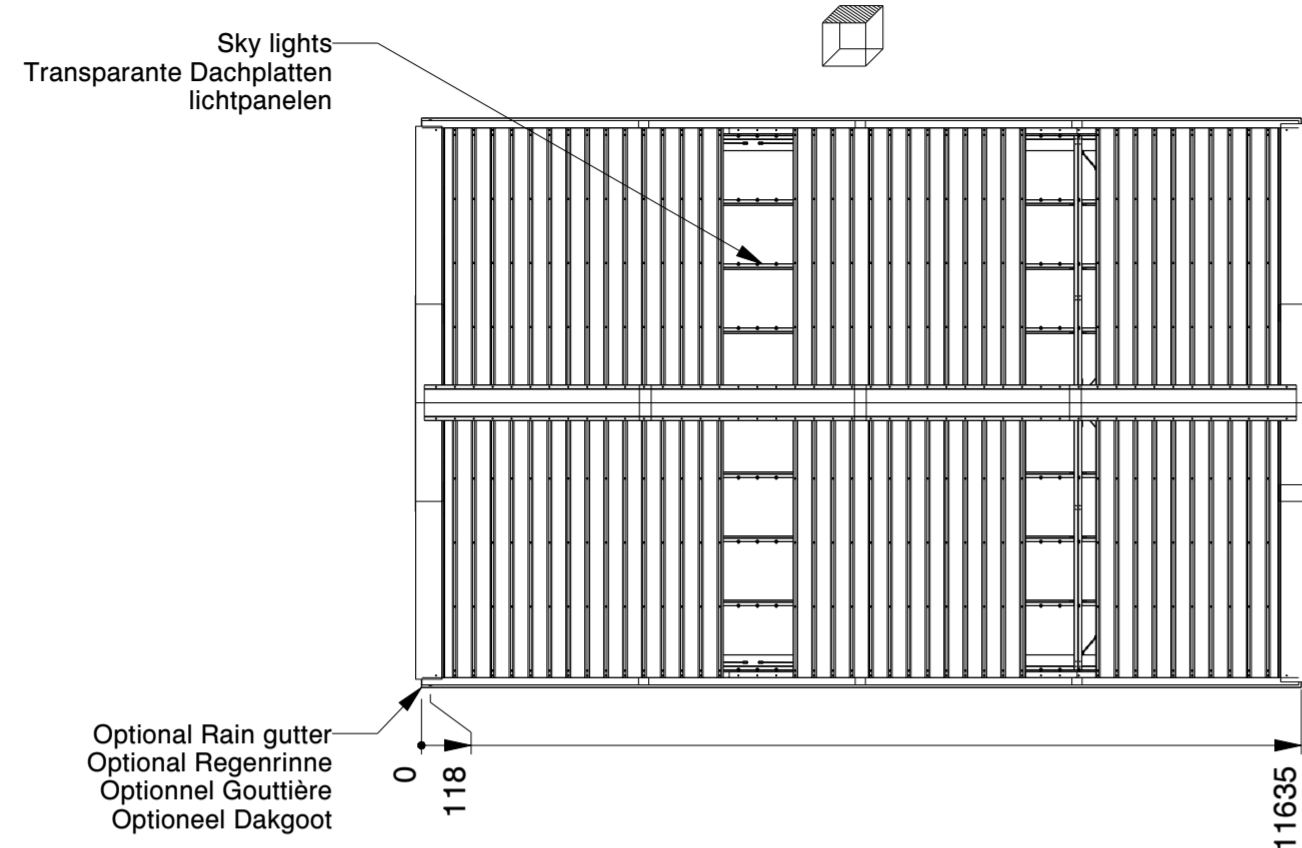
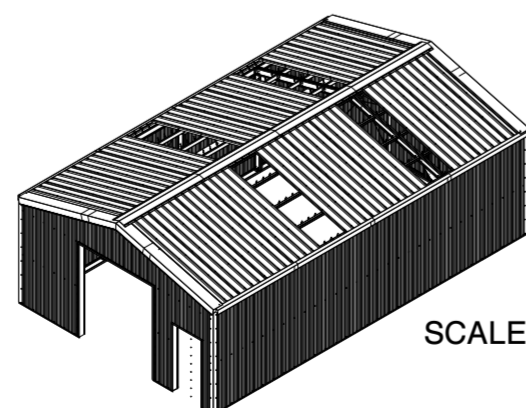


| Genehmigung / Approval / Goedkeuring | | |
|--|--|---|
| Kundenname: Client name: Klantnaam: | | Firmenstempel: Company stamp: Firmastempel: |
| Datum: Date: Datum: | | |
| Unterschrift: Signature: Handtekening: | | |

| | | | | |
|--|--|-----------------|--|---|
| KROFTMAN | LASERCUT ACCORDING: EN-ISO 9013-5-4-1 | | MATERIAL: See List | |
| | MATERIAL CERTIFICATE: 3.1 (OR 2.2 WHEN S235JR) | | TREATMENT: - | |
| | GALVANIZING ACCORDING: EN ISO 1461 | | STATUS: Released | |
| | BEND RADIUS UNLESS DEFINED R _i =t | | | |
| TOLERANCES UNLESS OTHERWISE SPECIFIED: | | | | |
| GENERAL ROUGHNESS R _a ✓ | DIMENSION: ± | ANGLE: ±° | MODEL NUMBER LCA00145 | REVISION: 0 |
| DESCRIPTION: Storage Building H7-33 | | | | |
| SCALE: 1:100 | UNITS: mm | PROJECTION: | MODIFIED ON: 08-09-2023 MODIFIED BY: AVA MASS: 8058,7 kg | APPROVED ON: 08-09-2023 APPROVED BY: BVB Sheet 1 of 4 Size: A2 |
| © KROFTMAN STRUCTURES B.V. Duplication and copying without written permission of the owner is prohibited | | | | |



SCALE 1:200



SCALE 1:200

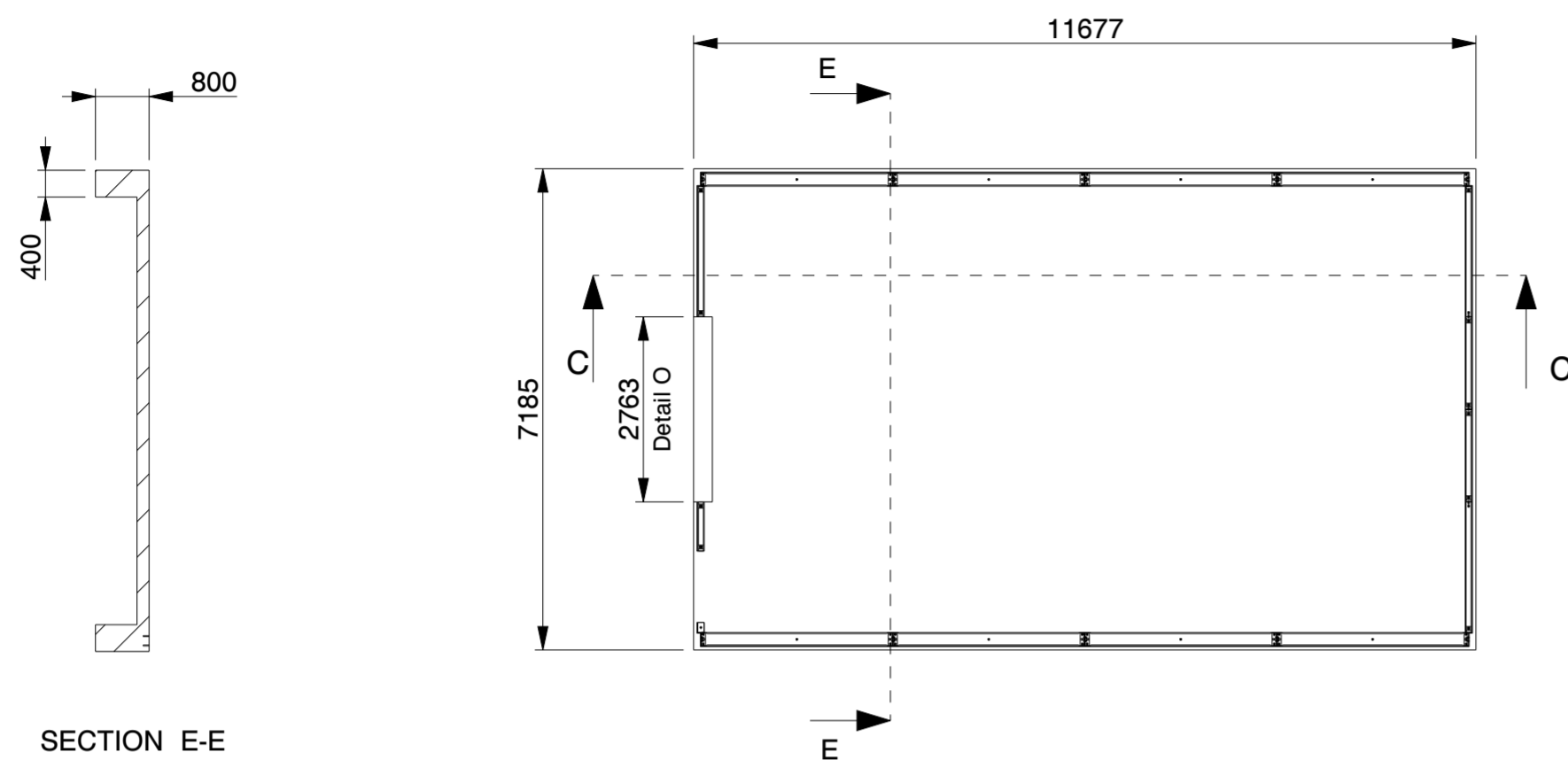
Genehmigung / Approval / Goedkeuring

| | | |
|--|--|---|
| Kundenname: Client name: Klantnaam: | | Firmenstempel: Company stamp: Firmastempel: |
| Datum: Date: Datum: | | |
| Unterschrift: Signature: Handtekening: | | |

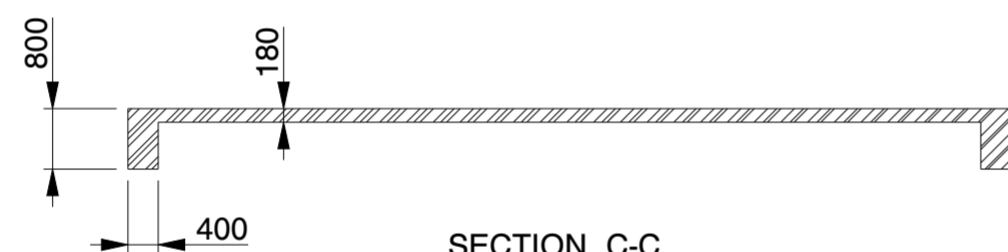
| SANDWICH DACHPLATTE | SANDWICH ROOF PANEL | PANNEAU SANDWICH DE TOIT |
|-------------------------|------------------------|--------------------------|
| POLYESTERBESCHICHTUNG | POLYESTER COATING | REVÊTEMENT POLYESTER |
| 0.4MM STAHL (INNEN) | 0.4MM STEEL (INSIDE) | 0.4MM MÉTAL (INTERNE) |
| 100/133MM PIR DÄMMSTOFF | 100/133MM PIR INSULANT | 100/133MM PIR ISOLANT |
| 0.5MM STAHL (AUSSEN) | 0.5MM STEEL (OUTSIDE) | 0.5MM MÉTAL (EXTERNE) |
| POLYESTERBESCHICHTUNG | POLYESTER COATING | REVÊTEMENT POLYESTER |

| SANDWICHPLATTE WAND | SANDWICH WALL PANEL | PANNEAU SANDWICH PAROI |
|-----------------------|-----------------------|------------------------|
| POLYESTERBESCHICHTUNG | POLYESTER COATING | REVÊTEMENT POLYESTER |
| 0.4MM STAHL (INNEN) | 0.4MM STEEL (INSIDE) | 0.4MM MÉTAL (INTERNE) |
| 100MM PIR DÄMMSTOFF | 100MM PIR INSULANT | 100MM PIR ISOLANT |
| 0.5MM STAHL (AUSSEN) | 0.5MM STEEL (OUTSIDE) | 0.5MM MÉTAL (EXTERNE) |
| POLYESTERBESCHICHTUNG | POLYESTER COATING | REVÊTEMENT POLYESTER |

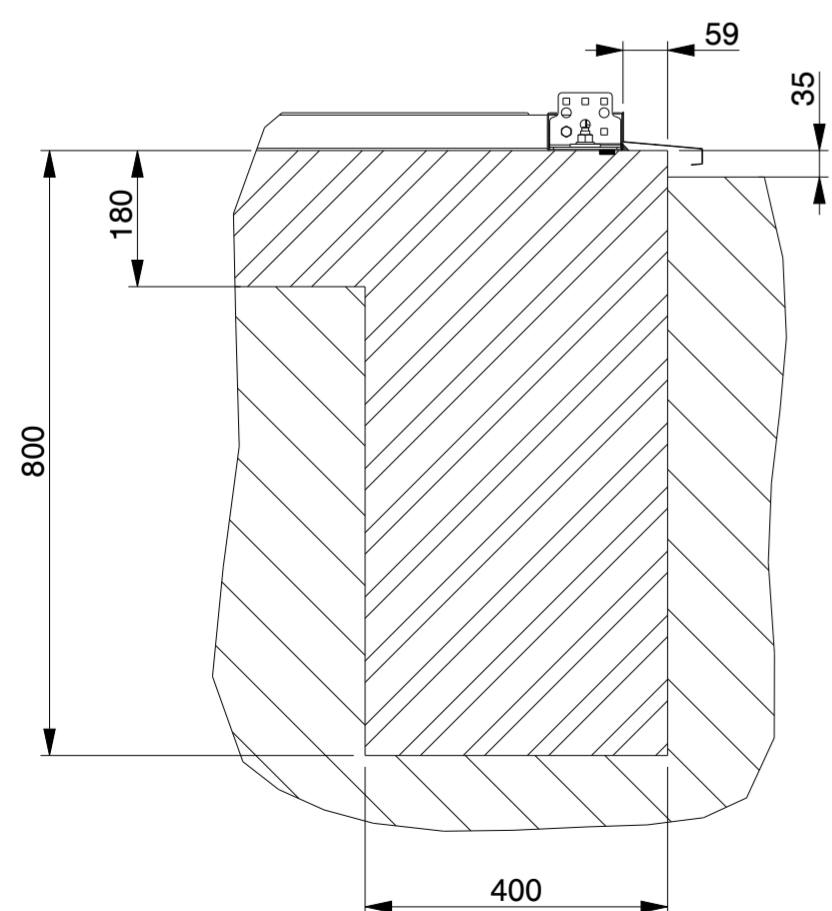
| | | | | |
|--|--|-----------------|---|---|
| KROFTMAN | LASERCUT ACCORDING: EN-ISO 9013-5-4-1 | | MATERIAL: See List | |
| | MATERIAL CERTIFICATE: 3.1 (OR 2.2 WHEN S235JR) | | TREATMENT: - | |
| | GALVANIZING ACCORDING: EN ISO 1461 | | STATUS: Released | |
| | BEND RADIUS UNLESS DEFINED R _i =t | | | |
| TOLERANCES UNLESS OTHERWISE SPECIFIED: | | | | |
| GENERAL ROUGHNESS R _a ✓ | DIMENSION: ± | ANGLE: ±° | MODEL NUMBER LCA00145 | REVISION: 0 |
| DESCRIPTION: Storage Building H7-33 | | | | |
| SCALE: 1:100 | UNITS: mm | PROJECTION: | MODIFIED ON: 08-09-2023 MODIFIED BY: AVA | APPROVED ON: 08-09-2023 APPROVED BY: BVB |
| | | | MASS: 8058,7 kg | Sheet 2 of 4 Size: A2 |



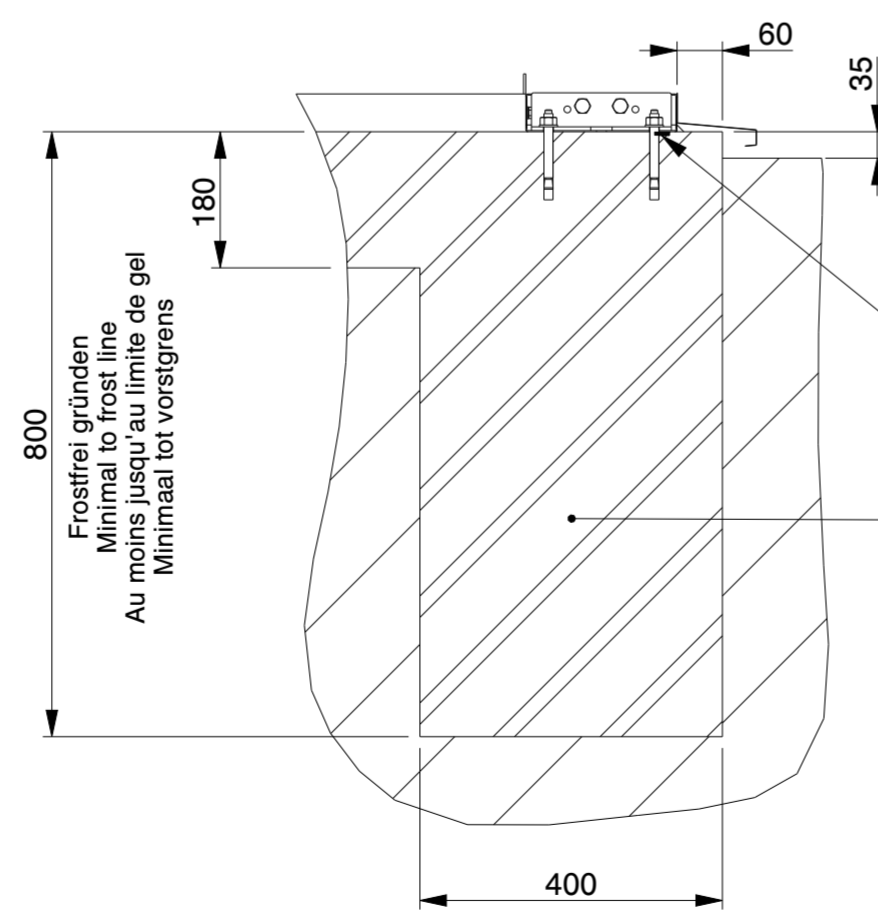
SECTION E-E



SECTION C-C



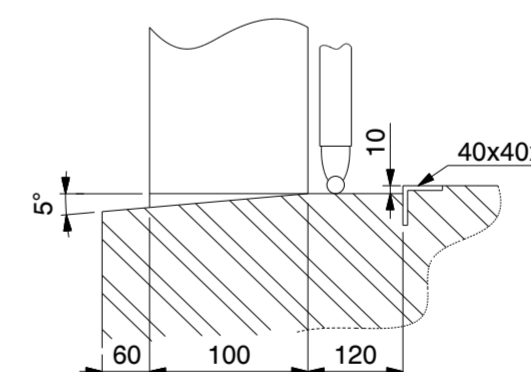
SECTION C-C
SCALE 1:10



SECTION E-E
SCALE 1:10

Butyl tape / Tixopalte sealing option
Butylband / Tixopalte Abdichtung Option
Ruban en butyle / joint en Tixopalte Option
Butylband / Tixopalte afdichting optie

Bewehrungsstahl wie in der Statik angegeben
Reinforcement bar as indicated in the
structural calculation
Armature de béton comme indique dans
le calcul de construction
betonstaal volgens de statische berekening



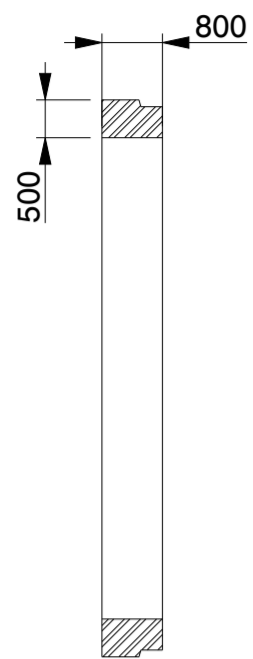
DETAIL O
(NOT TO SCALE)

Genehmigung / Approval / Goedkeuring

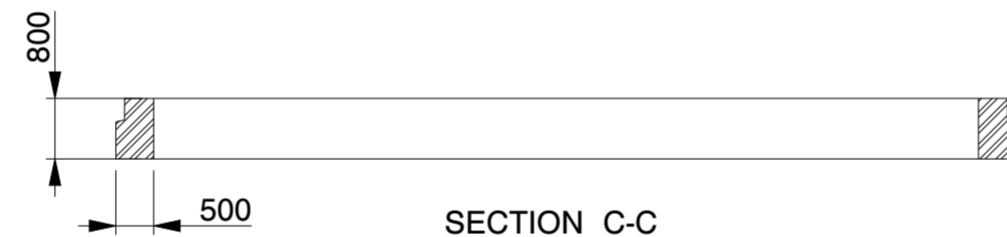
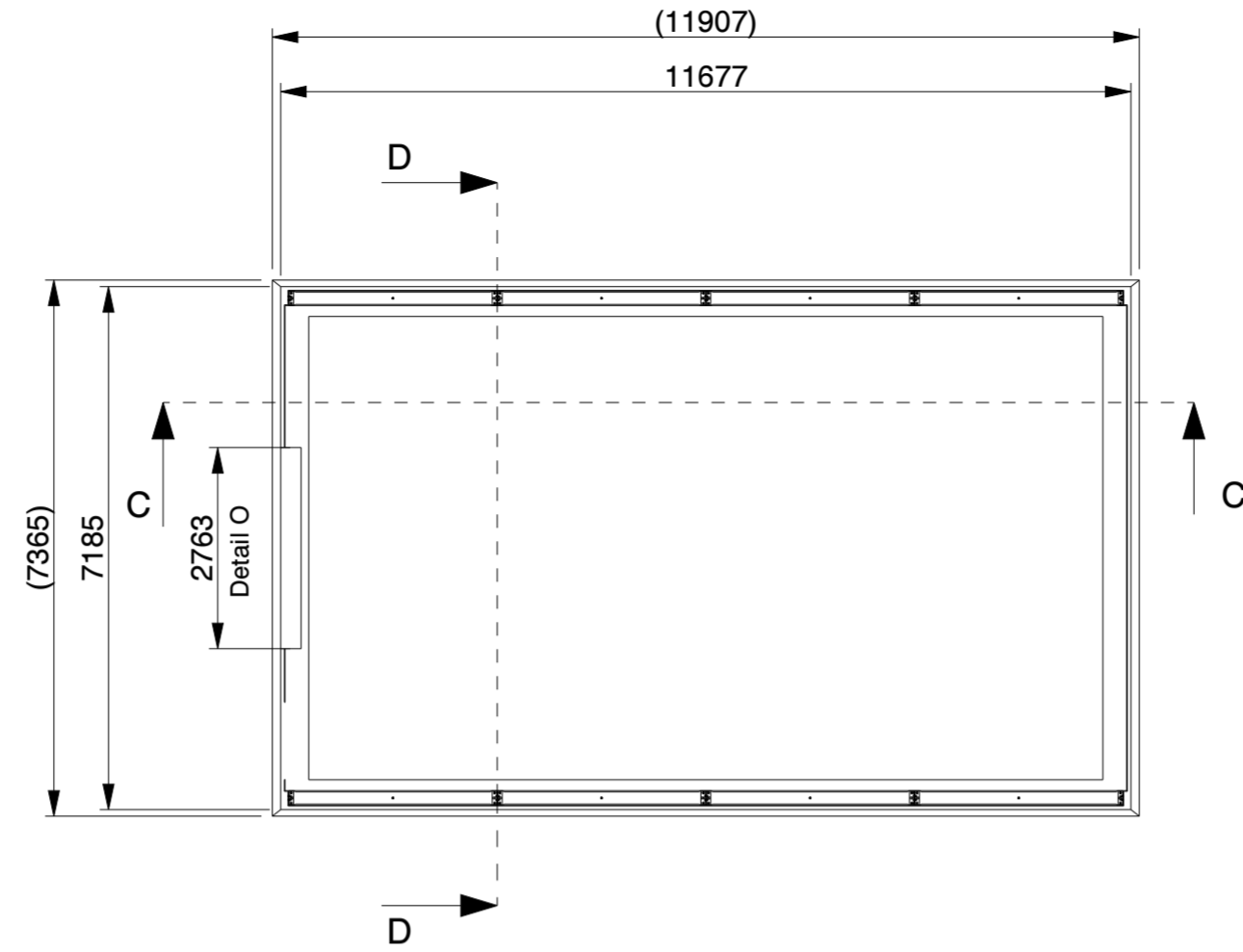
| | |
|--|---|
| Kundenname: Client name: Klantnaam: | Firmenstempel: Company stamp: Firmastempel: |
| Datum: Date: Datum: | |
| Unterschrift: Signature: Handtekening: | |

Betonplatte / Concrete slab / Dalle de béton

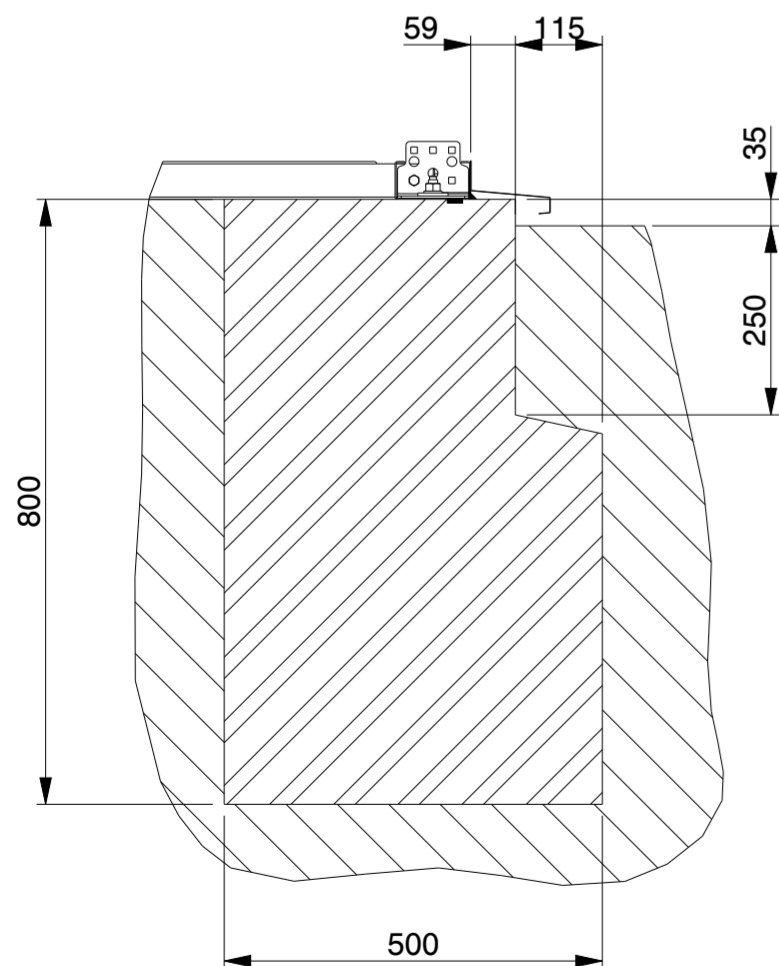
| | | | | |
|--|--|-------------------------|---|---|
| KROFTMAN | LASERCUT ACCORDING: EN-ISO 9013-5-4-1 | | MATERIAL: See List | |
| | MATERIAL CERTIFICATE: 3.1 (OR 2.2 WHEN S235JR) | | TREATMENT: - | |
| | GALVANIZING ACCORDING: EN ISO 1461 | | STATUS: Released | |
| | BEND RADIUS UNLESS DEFINED R _i =1 | | | |
| TOLERANCES UNLESS OTHERWISE SPECIFIED: | | | | |
| GENERAL ROUGHNESS R _a ✓ | DIMENSION: ± | ANGLE: ±° | MODEL NUMBER LCA00145 | REVISION: 0 |
| DESCRIPTION: Storage Building H7-33 | | | | |
| SCALE: 1:100 | UNITS: mm | PROJECTION: [Symbol] | MODIFIED ON: 08-09-2023 MODIFIED BY: AVA | APPROVED ON: 08-09-2023 APPROVED BY: BVB |
| MASS: 8058,7 kg | | Sheet 3 of 4 | | Size: A2 |



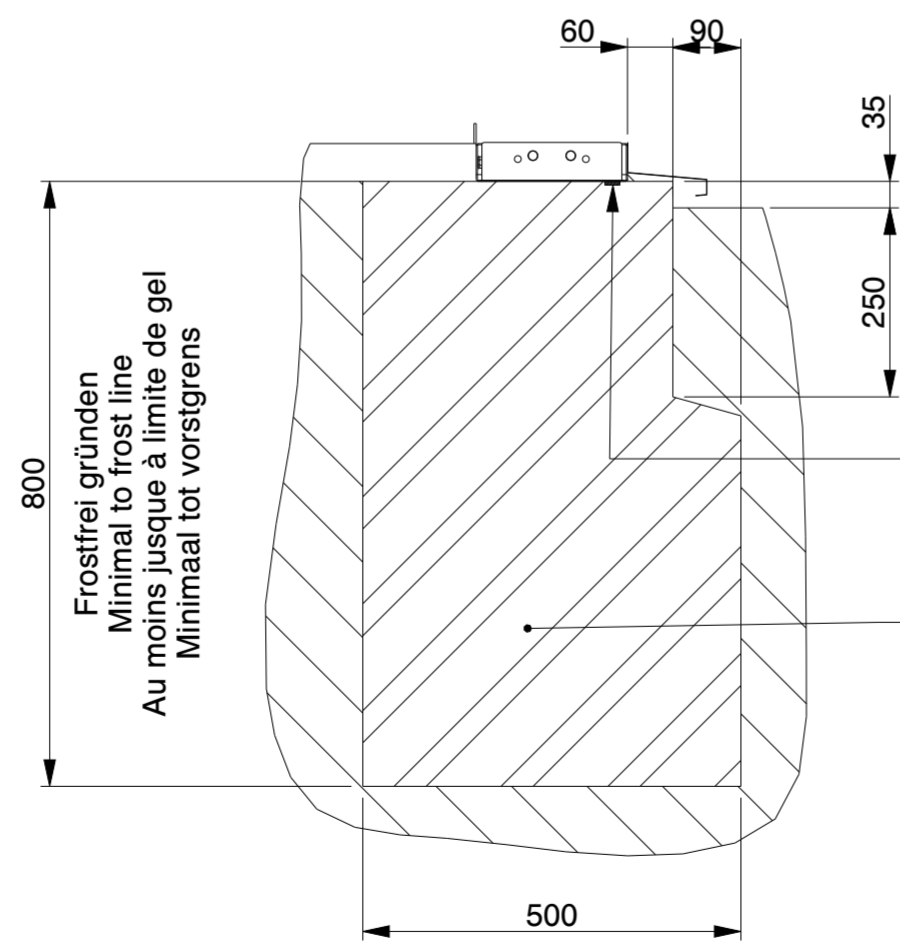
SECTION D-D



SECTION C-C



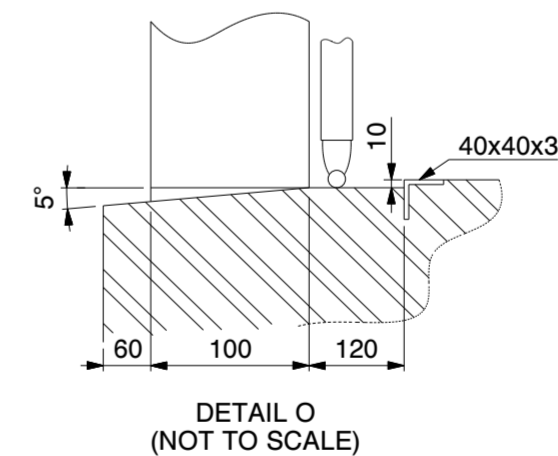
SECTION C-C
SCALE 1:10



SECTION D-D
SCALE 1:10

Butyl tape / Tixophalte sealing option
Butylband / Tixophalte Abdichtung
Ruban en butyle / joint en Tixophalte option
Butylband / Tixophalte afdichting optie

Bewehringsstahl wie in der Statik angegeben
Concrete reinforcement as indicated in
the structural calculation
Armature de béton comme indique dans le clacul
de construction
betonbewapening zoals in de
constructieberekening aangegeven



DETAIL O
(NOT TO SCALE)

Genehmigung / Approval / Goedkeuring

| | | |
|--|--|---|
| Kundenname: Client name: Klantnaam: | | Firmenstempel: Company stamp: Firmastempel: |
| Datum: Date: Datum: | | |
| Unterschrift: Signature: Handtekening: | | |

**Strookfundering / Streifenfundament /
Strip foundation / Fondation en bande**

| | | | | |
|---|--|-------------------------|---|---|
| KROFTMAN | LASERCUT ACCORDING: EN-ISO 9013-5-4-1 | | MATERIAL: See List | |
| | MATERIAL CERTIFICATE: 3.1 (OR 2.2 WHEN S235JR) | | TREATMENT: - | |
| | GALVANIZING ACCORDING: EN ISO 1461 | | STATUS: Released | |
| | BEND RADIUS UNLESS DEFINED R _i =1 | | | |
| TOLERANCES UNLESS OTHERWISE SPECIFIED: | | | | |
| GENERAL ROUGHNESS R _a ✓ | DIMENSION: ± | ANGLE: ±° | MODEL NUMBER LCA00145 | REVISION: 0 |
| DESCRIPTION: Storage Building H7-33 | | | | |
| SCALE: 1:100 | UNITS: mm | PROJECTION: [Symbol] | MODIFIED ON: 08-09-2023 MODIFIED BY: AVA | APPROVED ON: 08-09-2023 APPROVED BY: BVB |
| MASS: 8058,7 kg | | Sheet 4 of 4 | | Size: A2 |

© KROFTMAN STRUCTURES B.V. Duplication and copying without written permission of the owner is prohibited