

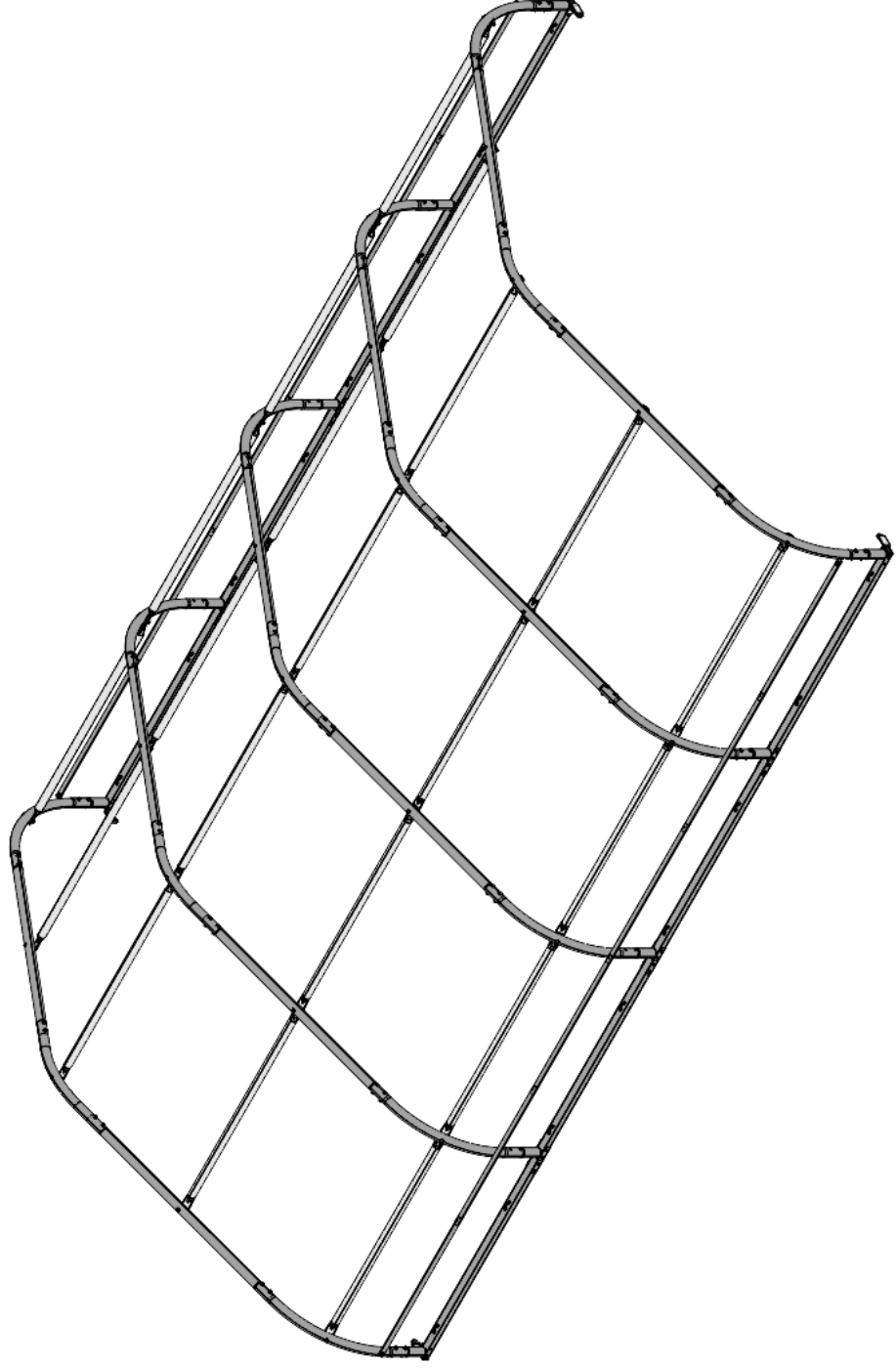
Containeroverkapping / Containerüberdachung / Container shelter / Abris sur container

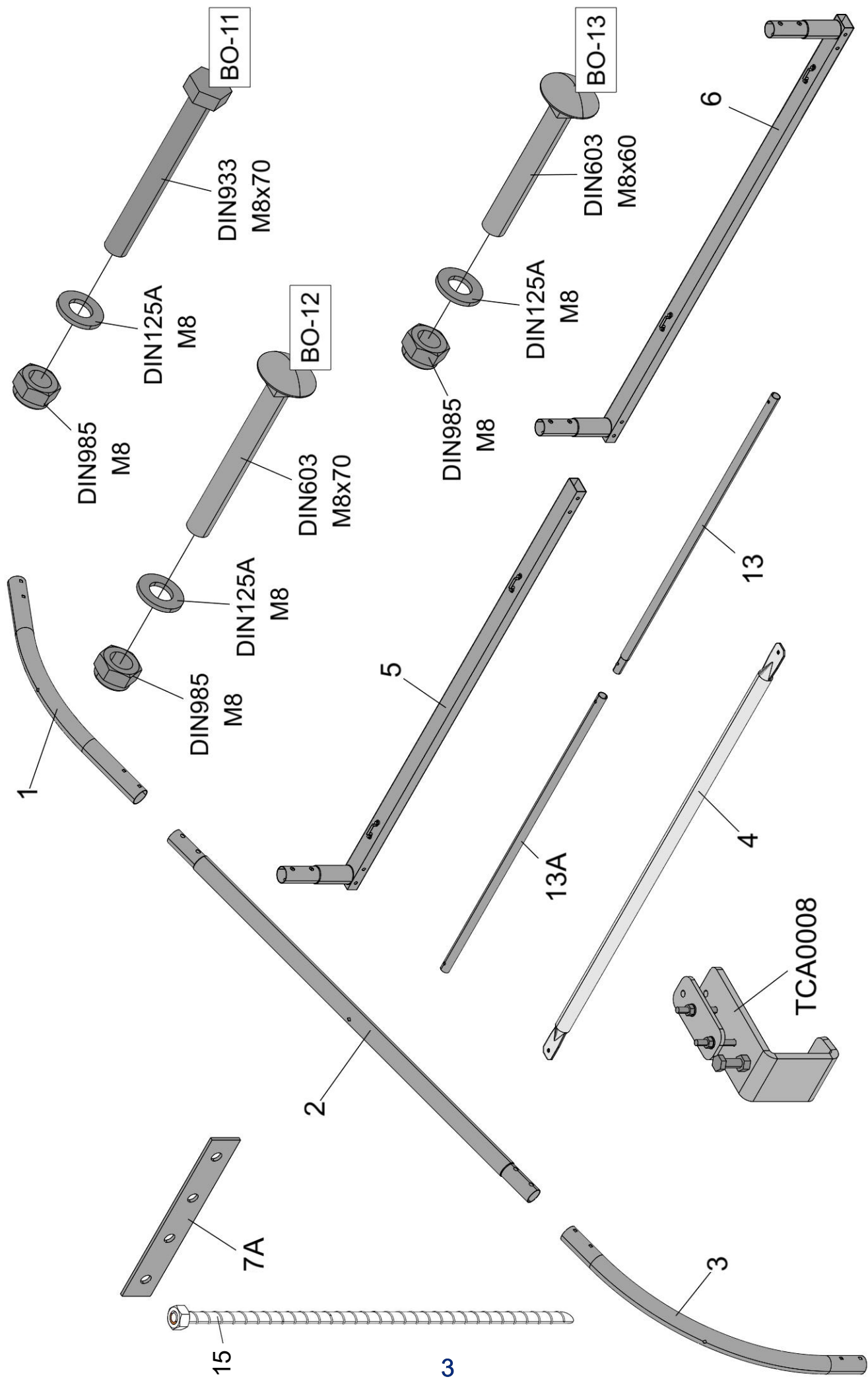
Kroftman CTS403

Montagehandleiding
Montageanleitung
Assembly manual
Manuel de montage

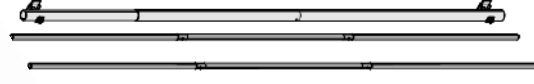


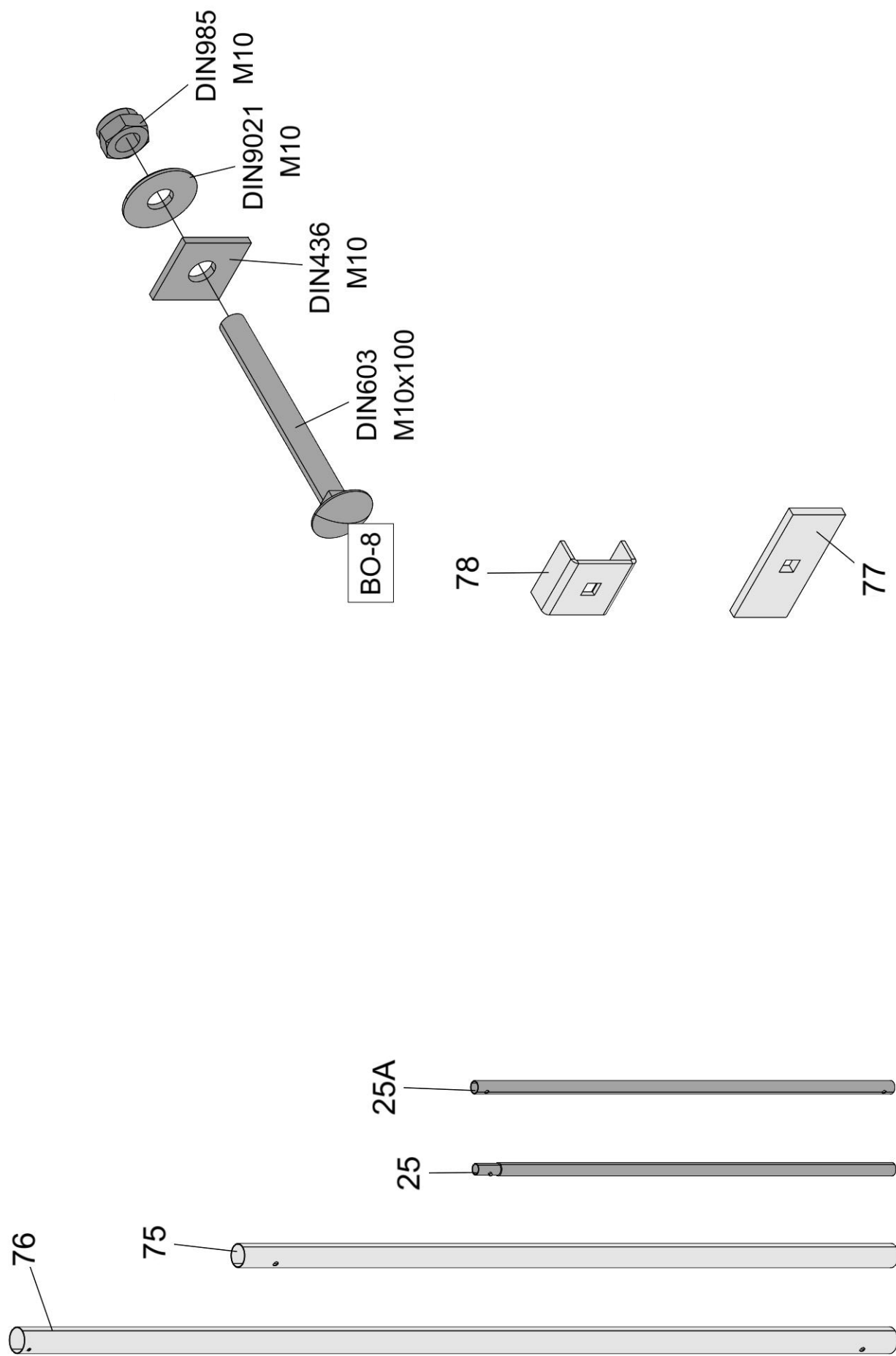
Parts identification for roof frame and base rails
Teilekennzeichnung für Dachrahmen und Grundträger
Identification des pièces pour le cadre de toit et les rails de base



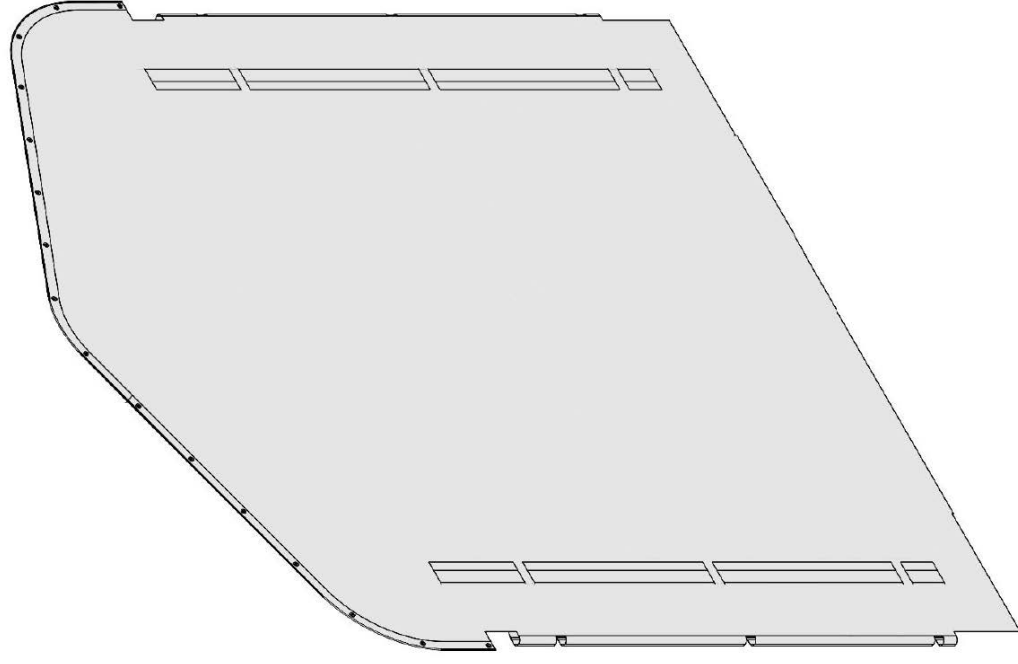


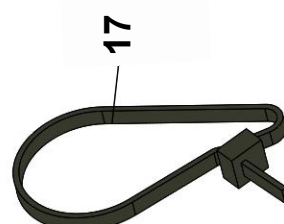
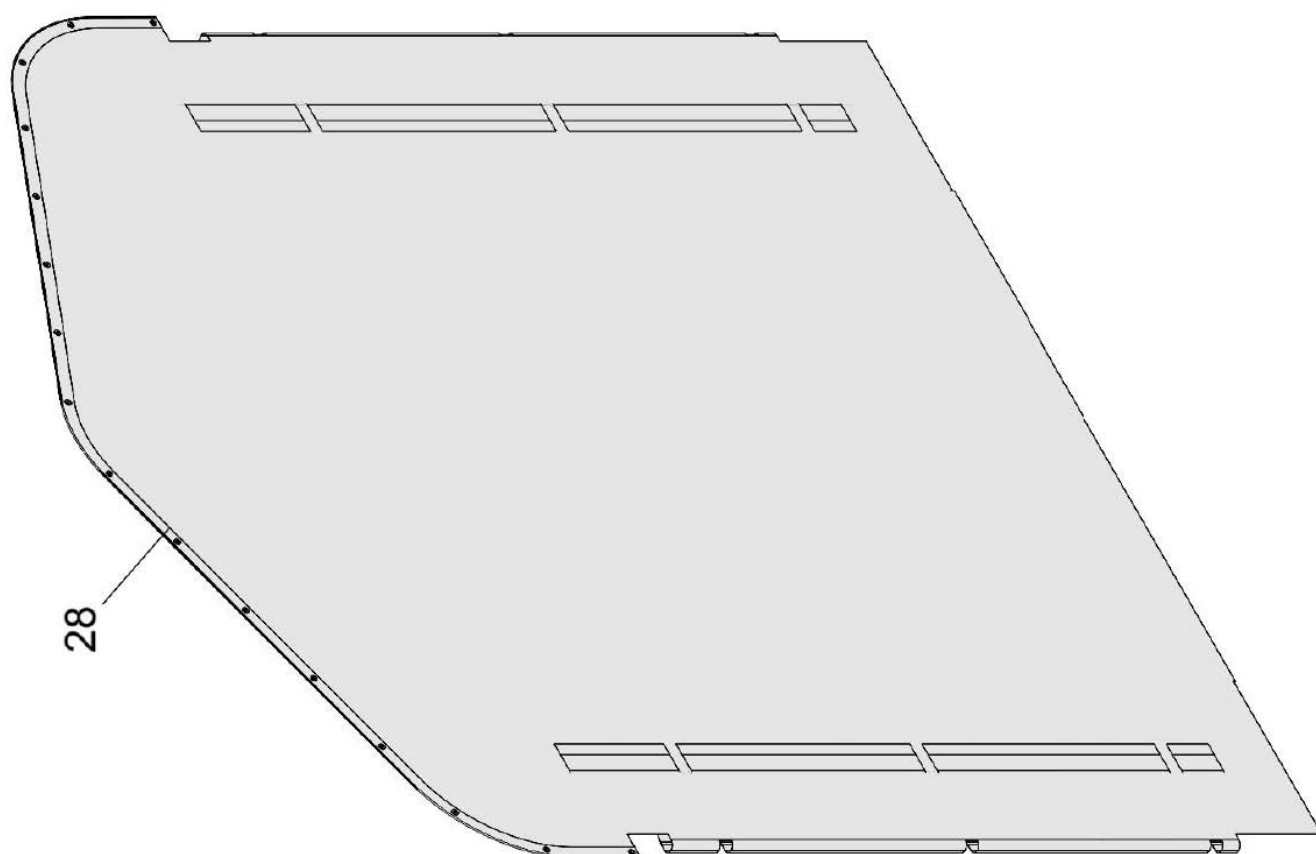
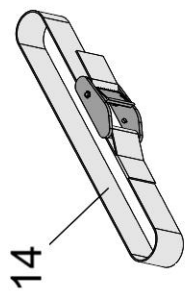
Parts identification for front wall / back wall frame
Teilekennzeichnung für Vorderwand-/Rückwandrahmen
Identification des pièces pour le cadre de la paroi avant / de la paroi arrière



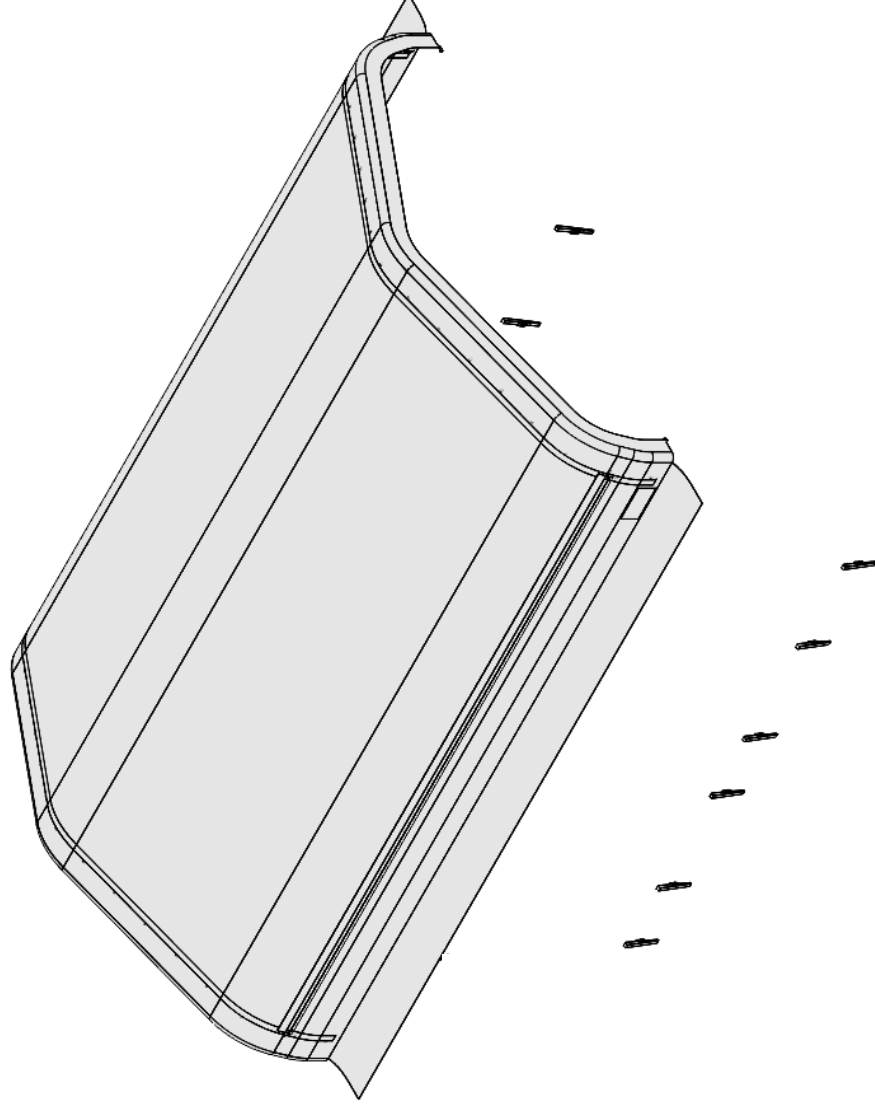


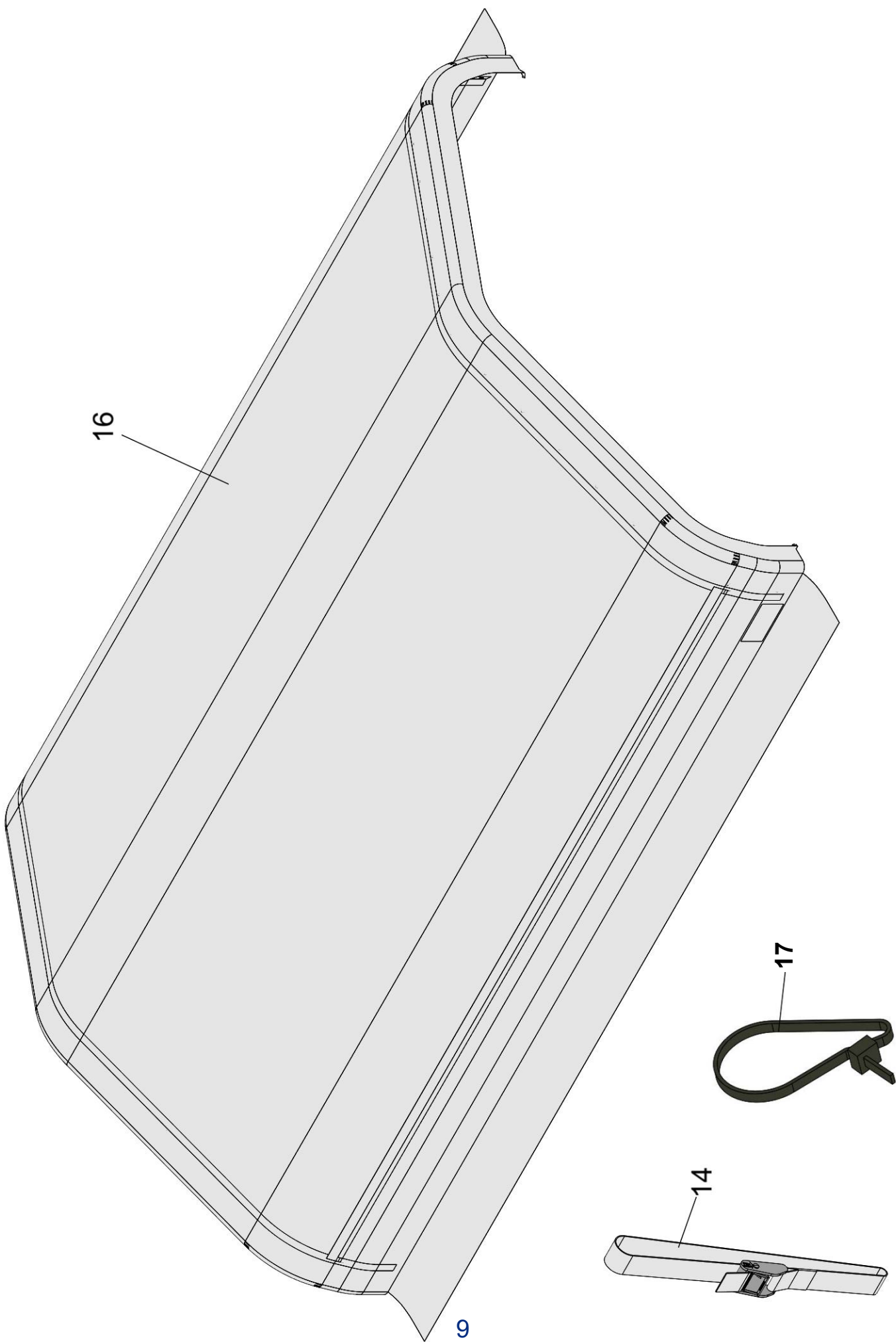
Parts identification for front wall / back wall cover
Teilekennzeichnung für Vorderwand-/Rückwandabdeckung
Identification des pièces pour le couvercle de la paroi avant / de la paroi arrière

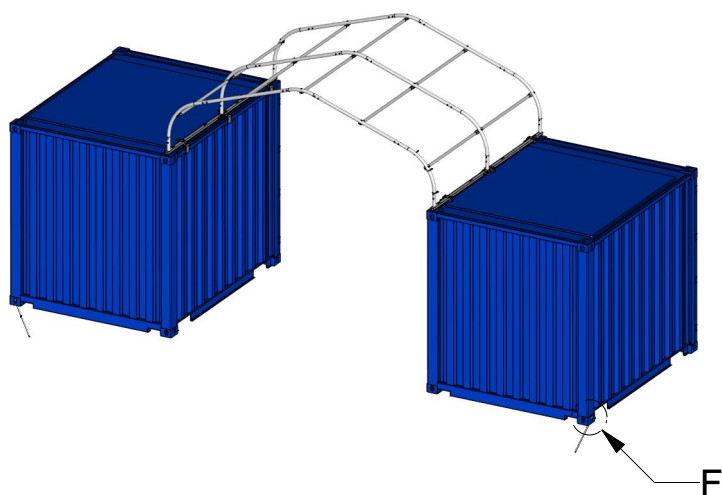
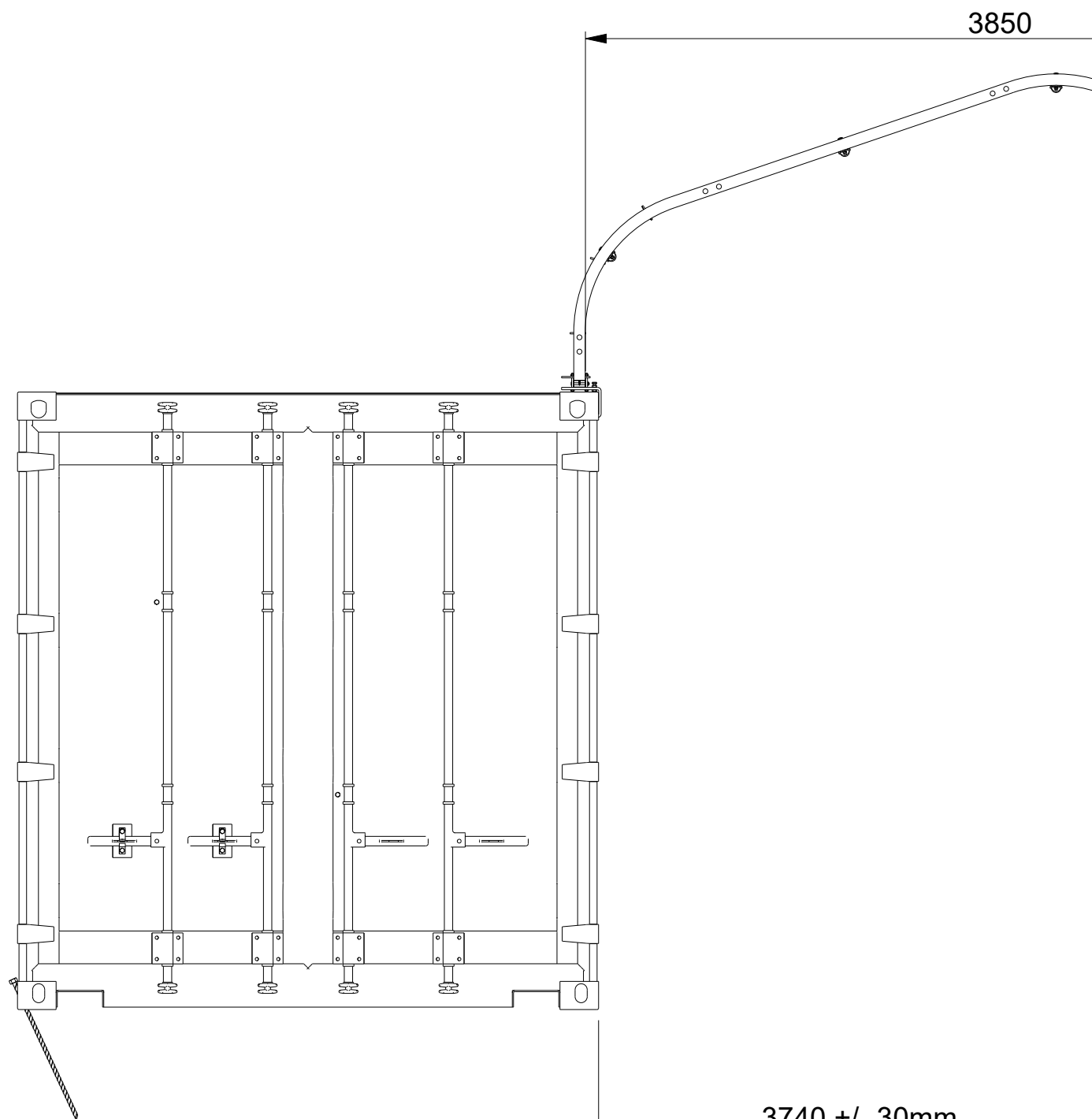




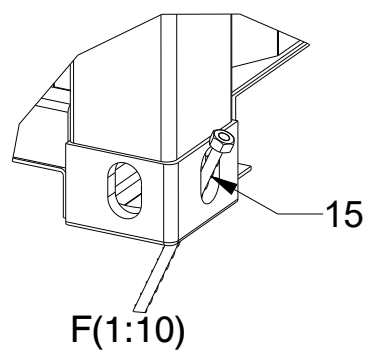
Parts identification for roof cover
Teilekennzeichnung für die Dachabdeckung
Identification des pièces pour la couverture du toit

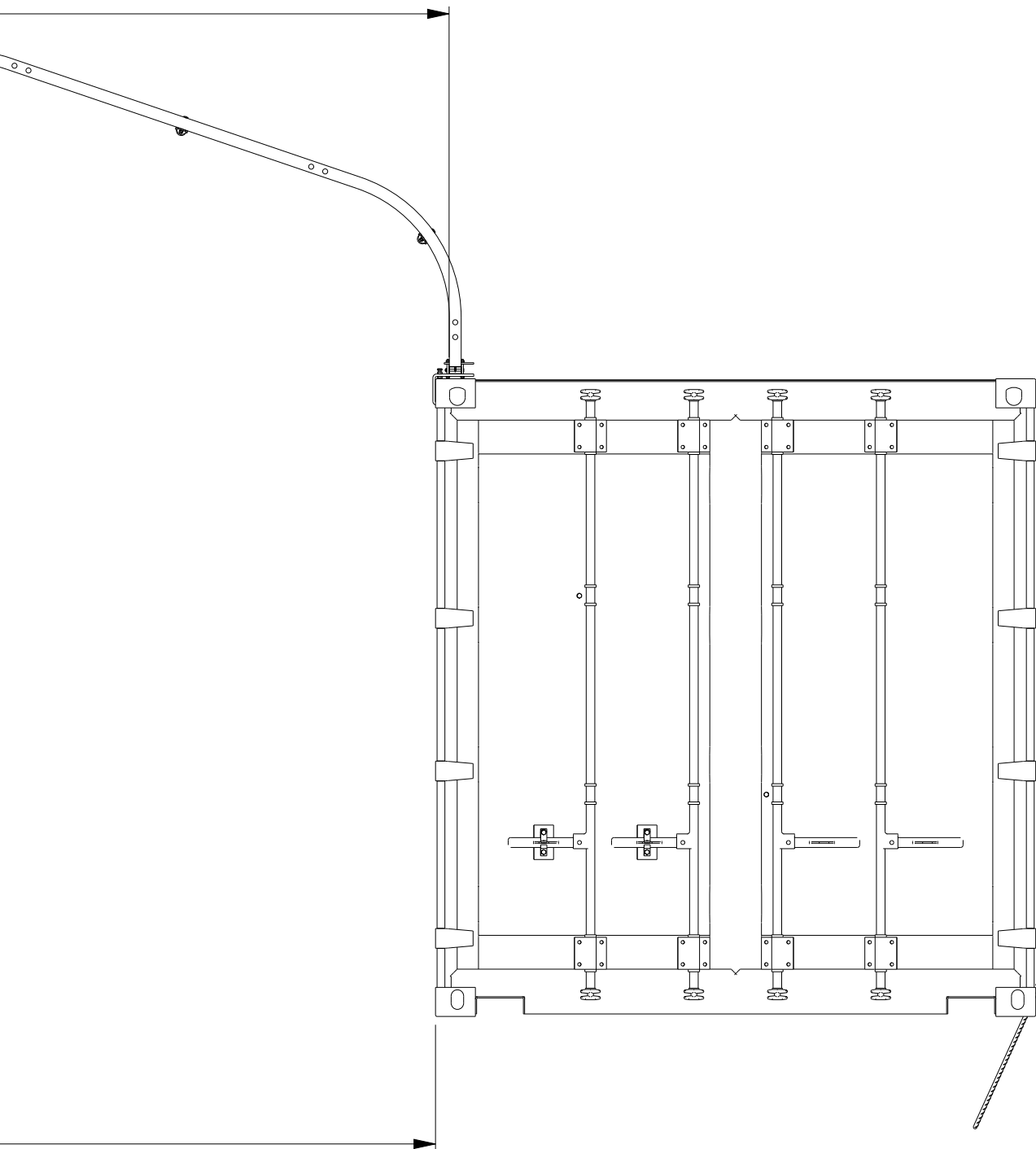






SCALE 1:100

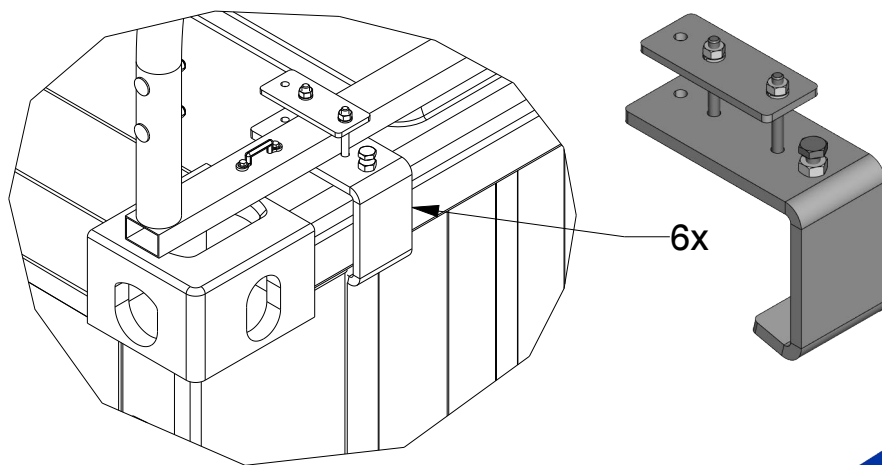




KROFTMAN®	Kroftman Structures B.V. P.O. Box 158 6900AD Zevenaar - The Netherlands T +31 26 700 9 700 F +31 26 20 22 097 E sales@kroftman.com - I www.kroftman.com			
	UMSCHREIBUNG: Container shelter DESCRIPTION:			
	PROJEKT: TC403 PROJECT:			
	PROJEKT NR: PROJECT NR: -	MODELL Nr.: TCA0045	REV.VER.: 0.0	
	Ø 2016 KROFTMAN STRUCTURES BV. Kopieren ohne genehmigung ist nicht erlaubt	RELEASE-STAND: RELEASE -	DATUM: 08-05-2019 DATE: ZEICHNET: - DRAWN: GEWICHT: 1351.159 WEIGHT:	EINHEIT: MM UNITS: MAßST.: 1:25 SCALE: BLATT: 1-5 SHEET:

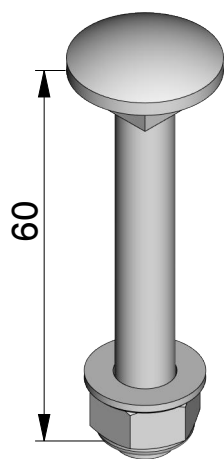
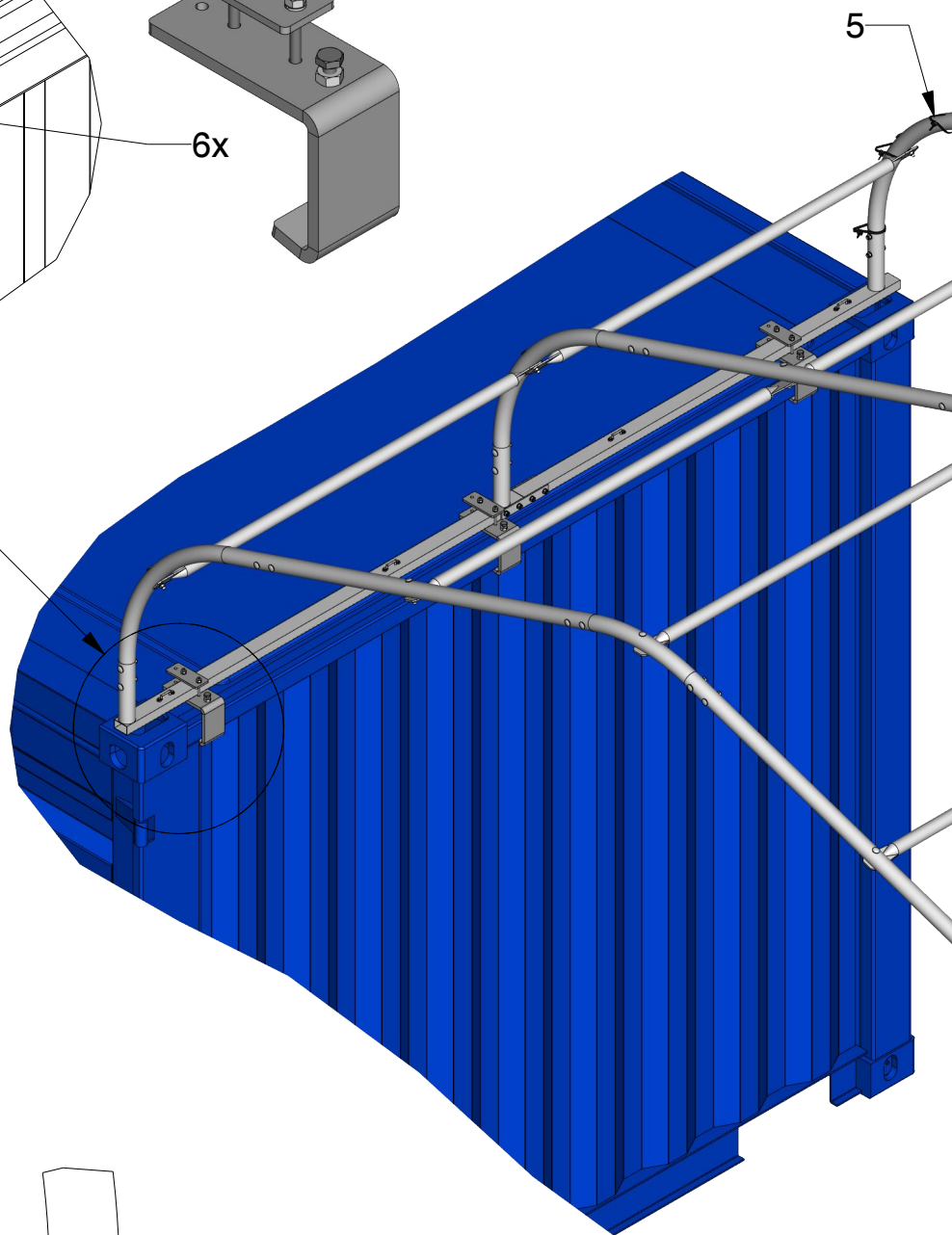


FORMAT A3

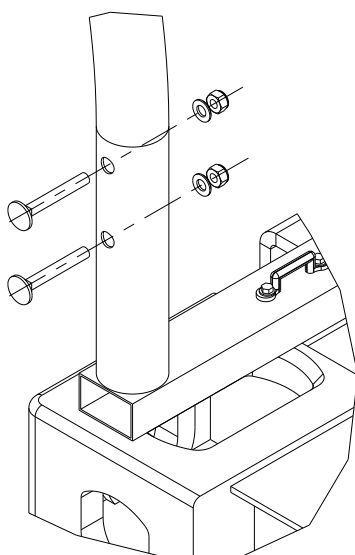


A(1:8)

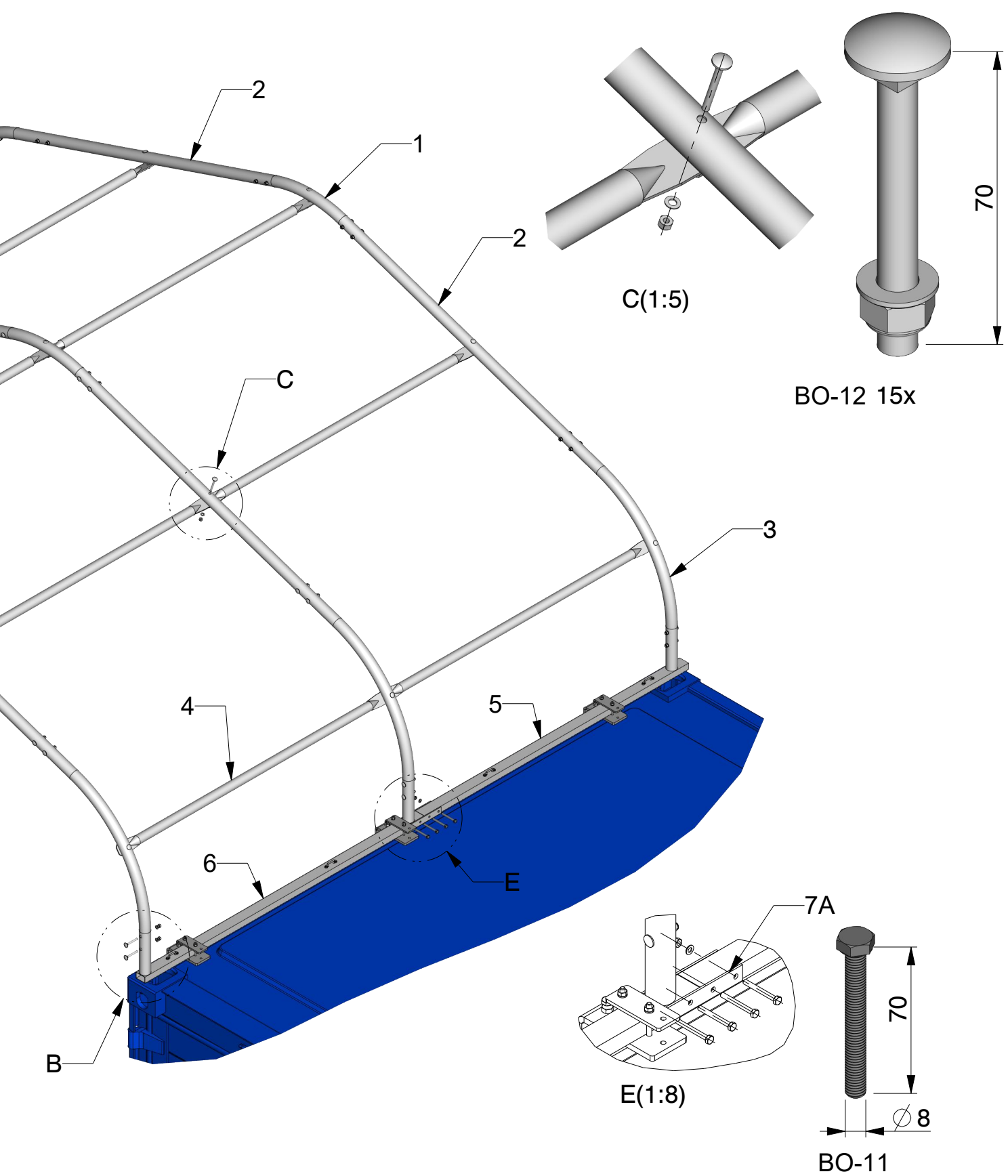
A

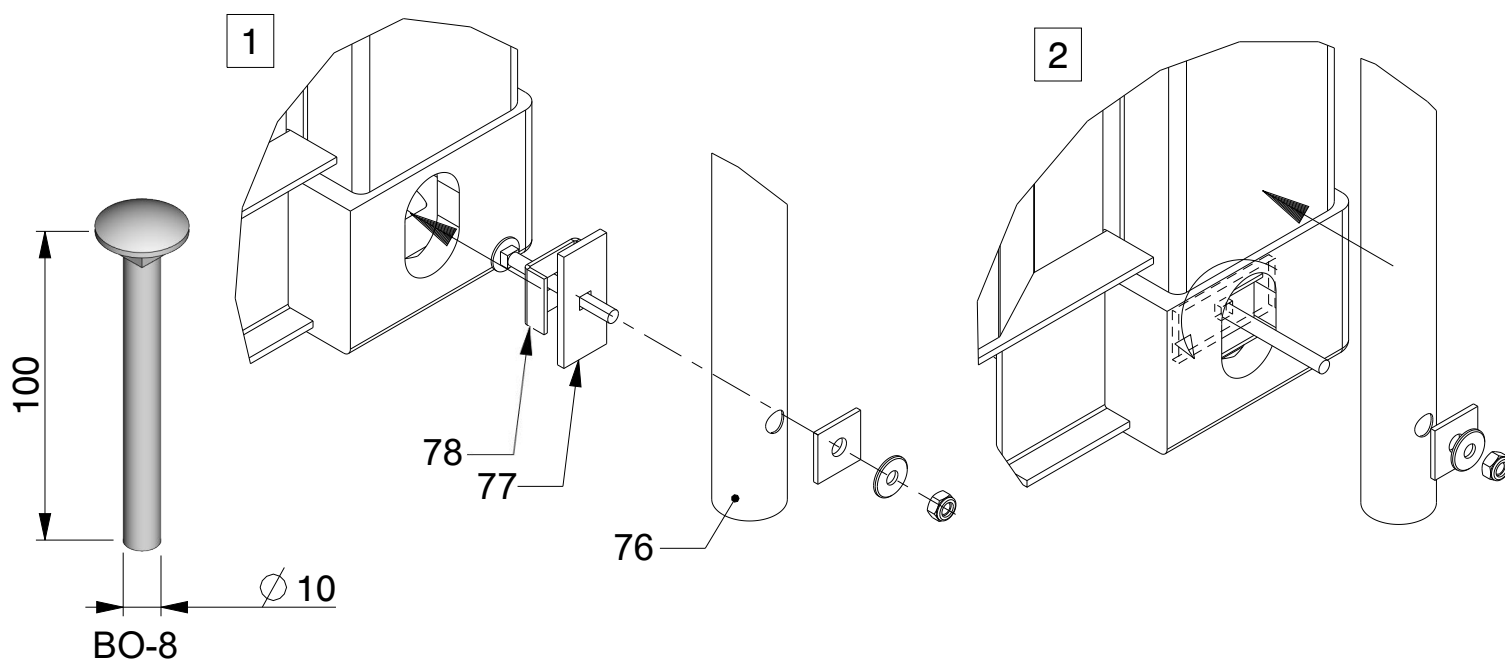
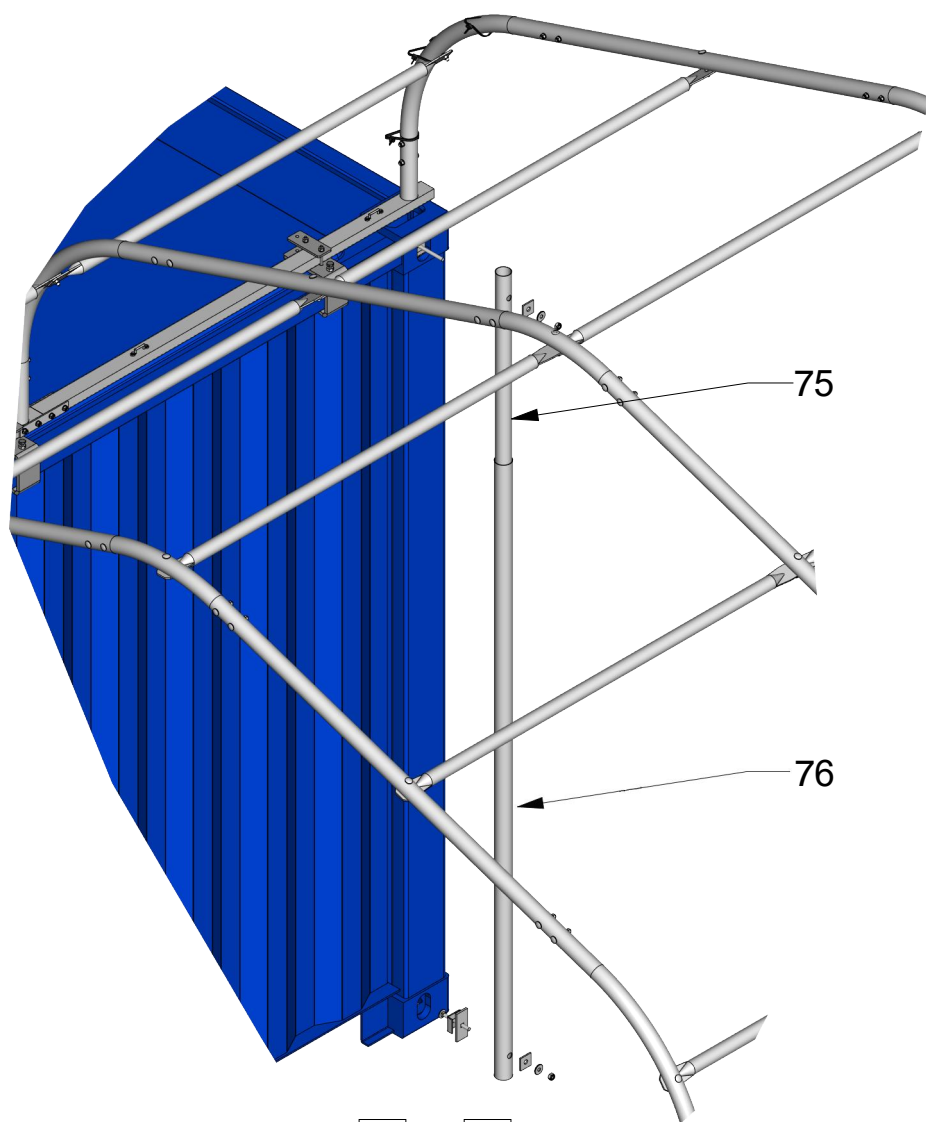


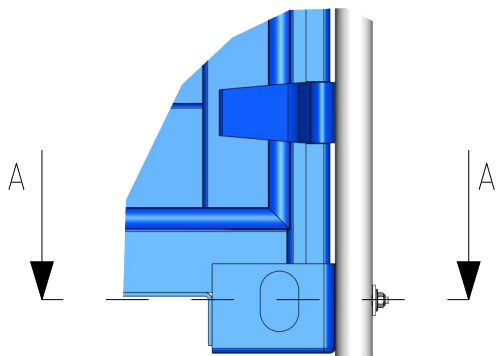
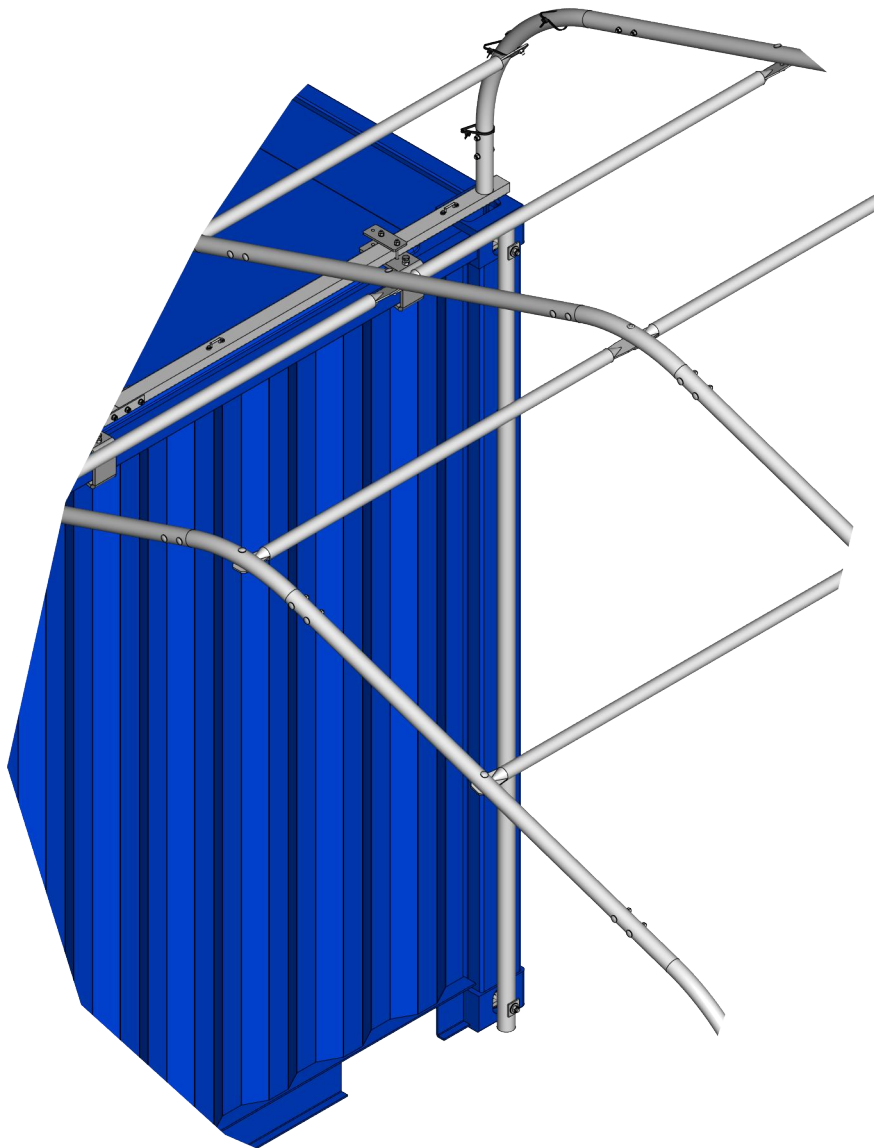
BO-13 36x



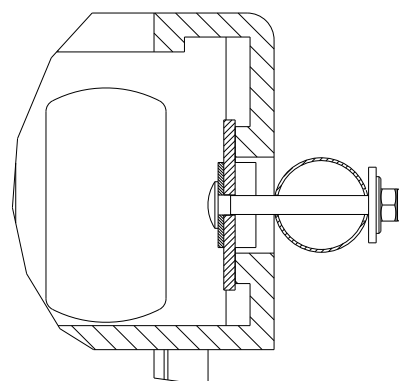
B(1:5)



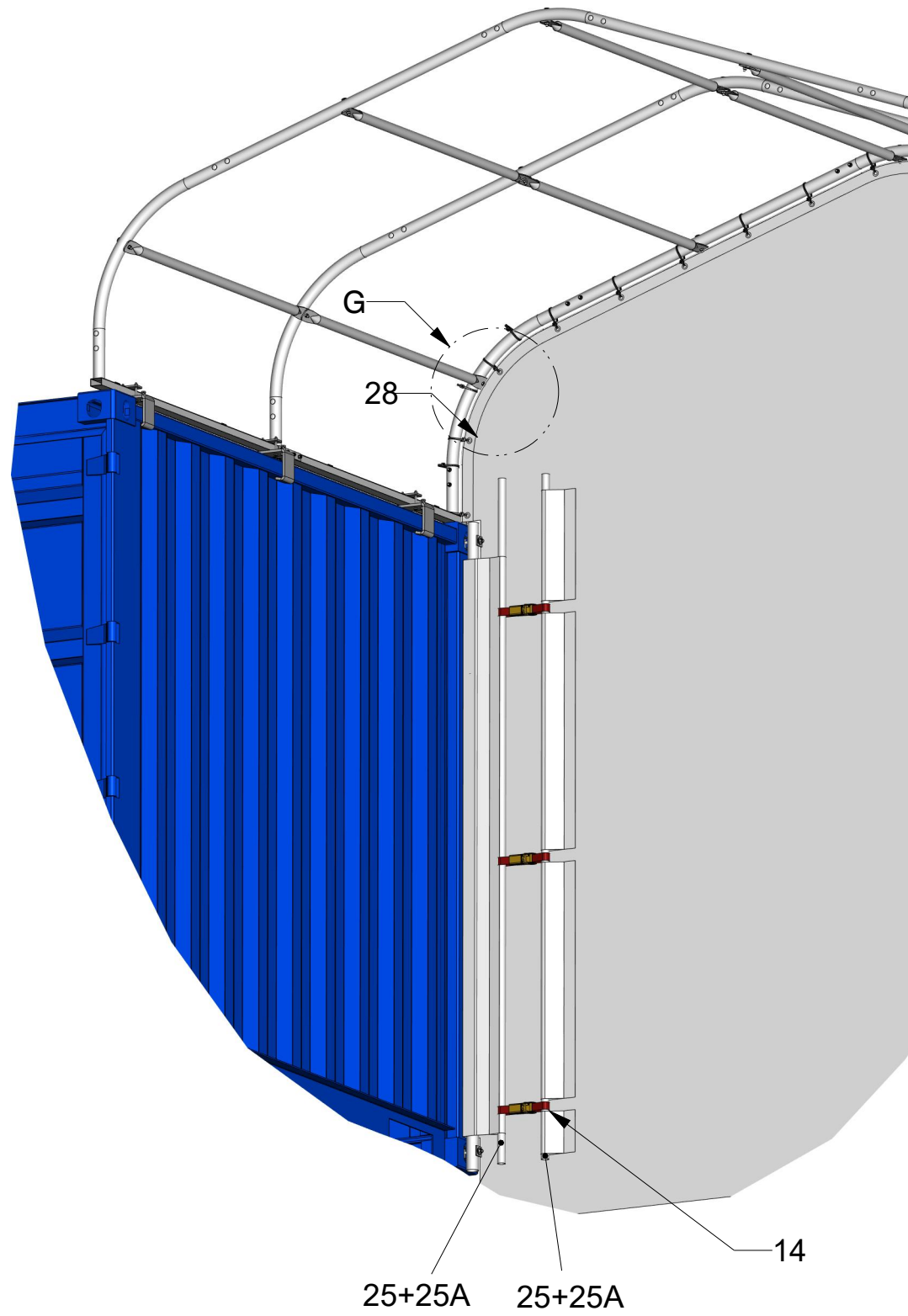


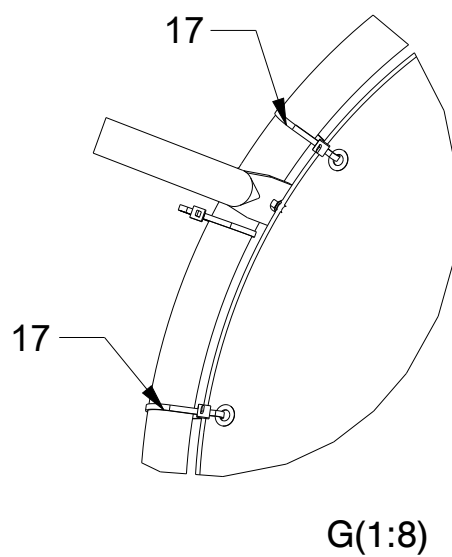
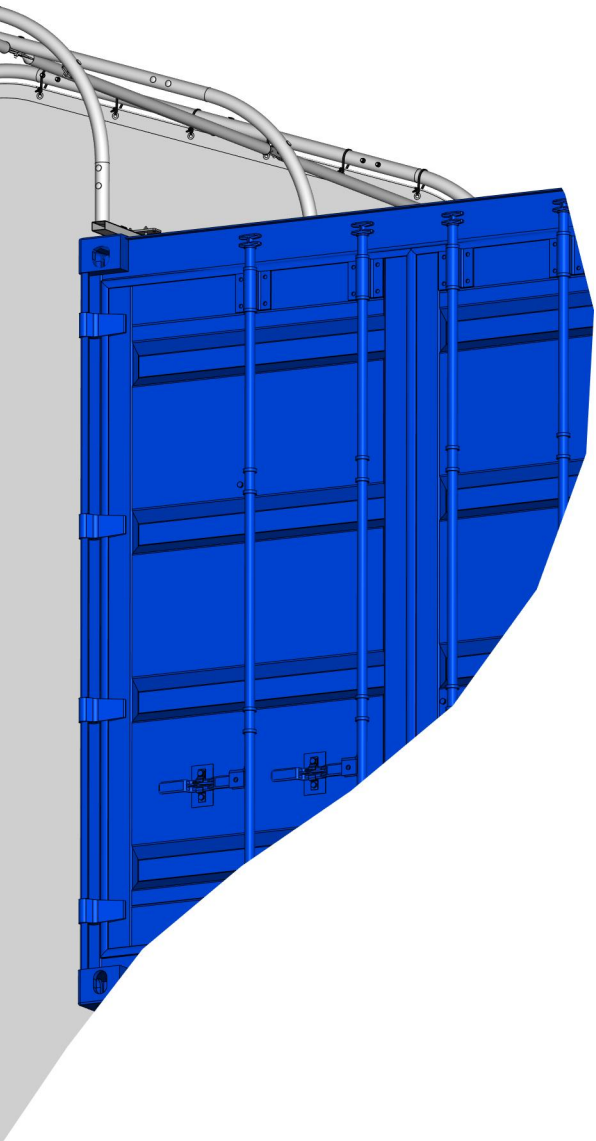


SCALE 1:10



SECTION A-A
SCALE 1:4





G(1:8)

