



Installation Manual

Front & Back Walls for

TC1012(PVC)

Parts List
Front panel for TC1012

Part Code	Description	Qty
1	Lower leg	6
1A	Lower leg connecting with cross tubes	2
2	Upper middle leg	2
2A	Upper leg at sides	2
3	Cross tube at middle	1set
4	Cross tube at sides	2
4A	Cross tube at sides	2
5	Base plate	4
6	Tensioning tube	2sets
7	Door drop tube	1set
8	Pole for zipper door	1
9	Tube clip for legs	4
9A	Tube clip for cross tubes	2
10	Tube clip for tensioning tubes	4
11	Bolt for legs	24
12	Bolt for cross tubes	6
13	Bolt for connection between legs and cross tubes	4
14	Bolt for tube clip	6
15	Bolt for tube clip on the base plate	8
16	Stake peg	8
17	End cover and ropes	1set

Parts List
Back panel for TC1012

Part Code	Description	Qty
1	Lower leg	6
1A	Lower leg connecting with cross tubes	2
2	Upper middle leg	2
2A	Upper leg at sides	2
3	Cross tube at middle	1set
4	Cross tube at sides	2
4A	Cross tube at sides	2
5	Base plate	4
6	Tensioning tube	2sets
7	Tensioning tube in the middle	1set
9	Tube clip for legs	4
9A	Tube clip for cross tubes	2
10	Tube clip for tensioning tubes	6
11	Bolt for legs	24
12	Bolt for cross tubes	6
13	Bolt for connection between legs and cross tubes	4
14	Bolt for tube clip	6
15	Bolt for tube clip on the base plate	12
16	Stake peg	8
17	End cover and ropes	1set

Assembly Step

Step 1 - Assemble legs and cross tubes together.

Assemble 4 legs and base plates (1#, 1A#,2#, 2A# and 5#) on ground first by bolts (11#). Then connect cross tubes (3#, 4# and 4A#) with legs at middle by bolts(12# and 13#).

Step 2 – Loose the bolts of the front or back end roof tubing of container shelter, and draw out swaged ends, then get the clips (9# and 9A#) through the tubing. PLEASE NOTE THE ORDER OF 9# AND 9A# according to the sketch.

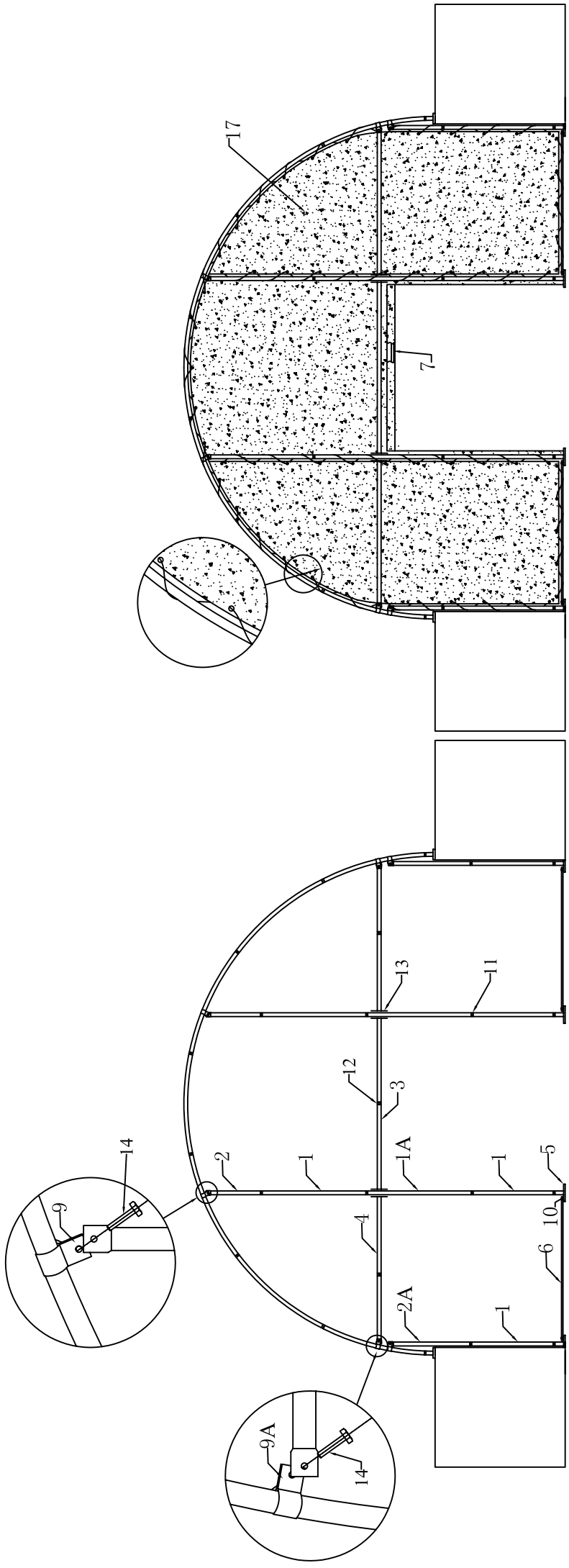
Step 3 – Stand the assembled legs at middle and cross tubes, and bolt them to the end roof tubing by clips. Then fix the base plates to ground by Stake pegs (16#) immediately. Stand the legs at sides and bolt them by clips, then fix the base plates by stake pegs immediately too.

Step 4 – Assemble tensioning tubes and tube clips (10#) on base plates by bolts (15#).

Step 5 – Lacing End cover (17#) to frame by nylon ropes provided.

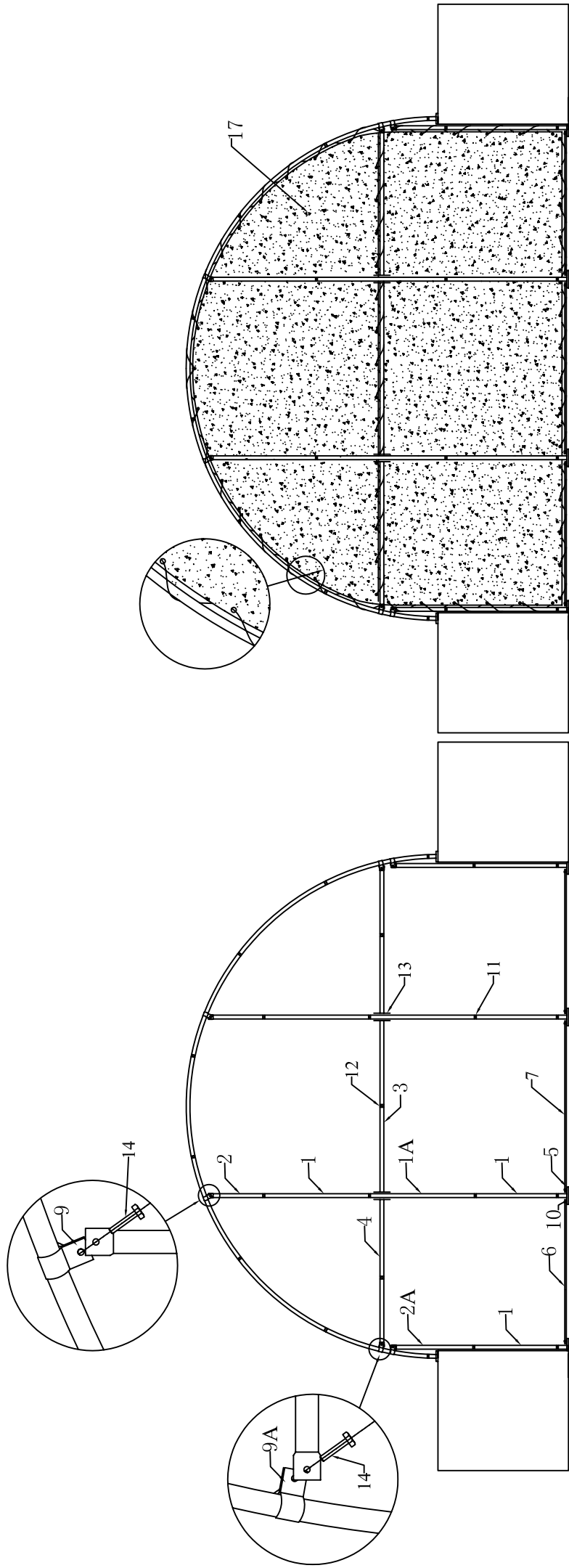
Then insert Door dropping tube (7#) into the pocket at the bottom of door on cover.(For Front panel)

NOTE: If there is location/installation tolerance during assembly of end panel, please adjust base plates or containers distance slightly.



Front panel for 10.0m Wide Container shelter (a)

Front panel for 10.0m Wide Container shelter (b)



Back panel for 10.0m Wide Container shelter (a)

Back panel for 10.0m Wide Container shelter (b)