



# WE'VE GOT YOU COVERED

**INSPIRATION BOOK 2026**



**CONTAINER SHELTER**



**BUNKER SILO SHELTER**



**WORKBOX**

# OUR SOLUTION

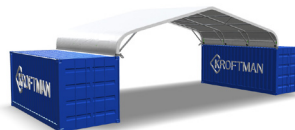
Container shelters, bunker silo shelters and Workboxes are versatile and durable solutions for storage and workspace across various Industries. They provide protection against rain, wind and other weather conditions, ensuring that materials, machines and activities remain safe and dry.

Thanks to their robust construction and well-thought-out design, these solutions are suitable for intensive daily use. In addition, they contribute to an efficient and organized working environment, where safety and sustainability are key.

## COMPLIANT WITH EN-13782 NORMS



- ✓ 10-year warranty
- ✓ Developed in Europe
- ✓ Developed according to Eurocode norms



## DESIGN YOUR OWN SHELTER IN 3D

Try it at [kroftman.com](https://kroftman.com)

# CONTAINER SHELTER

A container shelter is a flexible solution for quickly creating additional covered space. The structure is placed on two containers and provides protection against rain and wind for materials, machines and vehicles.

Thanks to its modular design, the shelter is easy to assemble and relocate, making it ideal for use in construction, logistics and industry, among others.

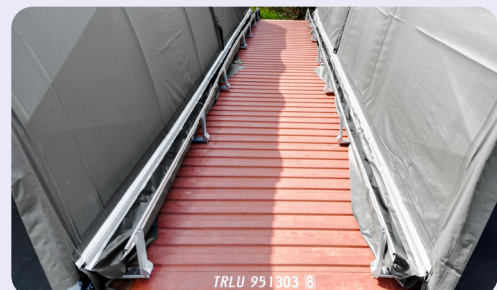


## INCLUDING FREE BUILD BOOK

- ✓ Technical drawings & calculations
- ✓ Complies with EN13782

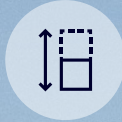


Discover more about this product at [kroftman.com](https://kroftman.com)





10-year warranty



Flexible heights



4, 6, 8, 10, 12 & 15 meters



All weather



# BUNKER SILO SHELTER

A bunker silo shelter helps protect bulk materials from rain and leaching, which is increasingly required by environmental regulations. It shows that you are taking the right measures and makes it easier to meet inspection and compliance requirements.

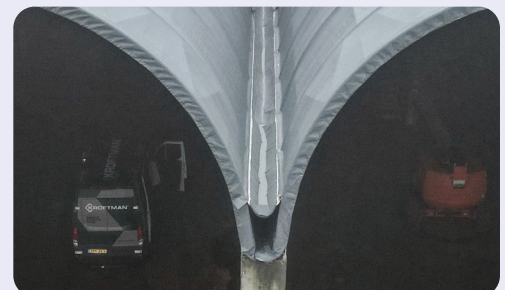


## INCLUDING FREE BUILD BOOK

- ✓ Technical drawings & calculations
- ✓ Complies with EN13782

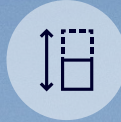


Discover more about this product at [kroftman.com](https://kroftman.com)





10-year warranty



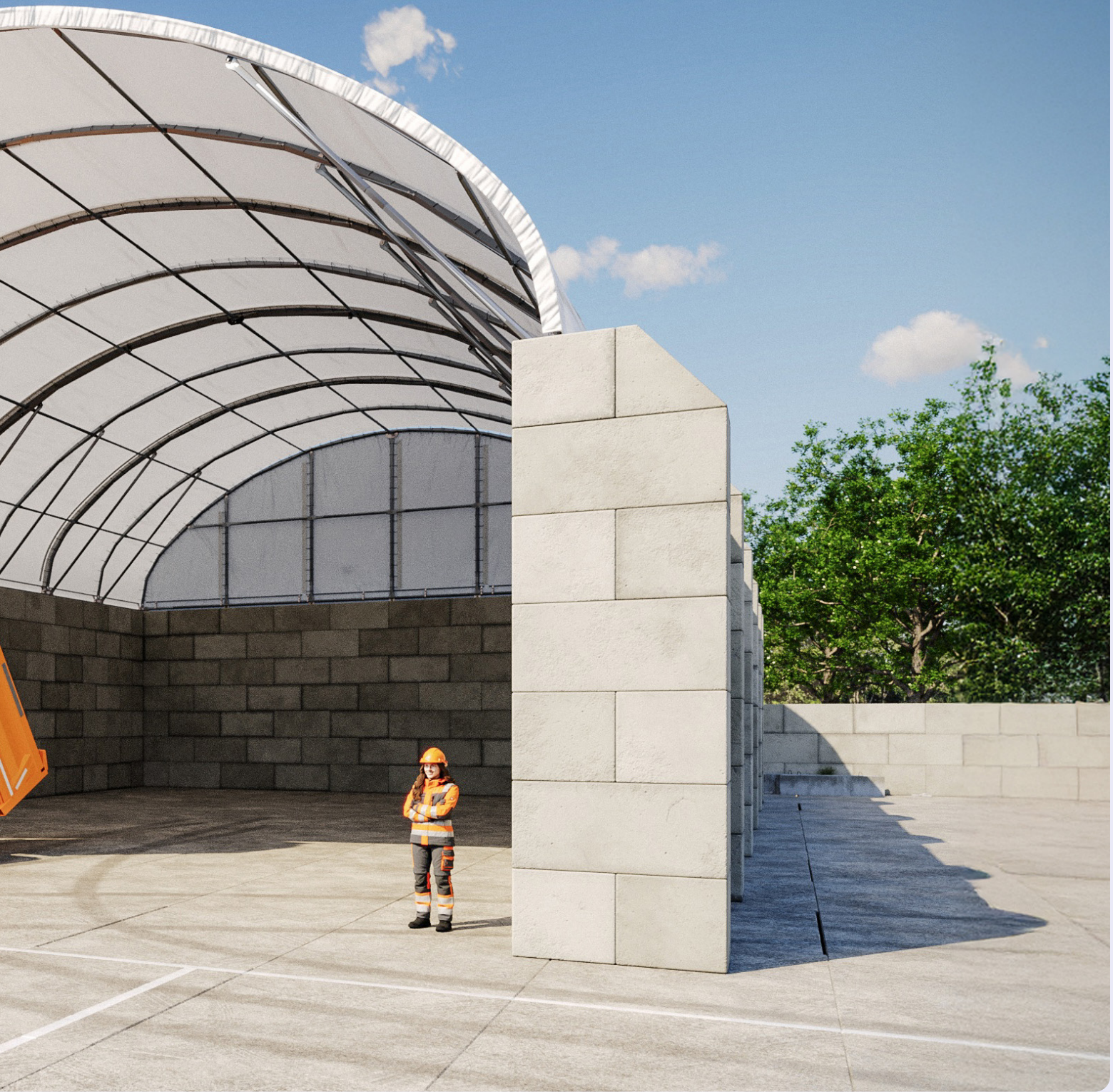
Flexible heights



8, 10, 12 & 15 meters



All weather



# WORKBOX

A Workbox is a modular workspace and storage solution between containers, designed for longer-term temporary use at one location. It provides reliable protection for tools, materials, and daily operations.

With its lower profile, it is ideal for windy environments like coastal or offshore sites. The container-based setup ensures stability under demanding conditions.

Without a fabric cover, tasks like welding and grinding can be safely carried out inside. Its modular design makes it flexible, easy to adapt, and suitable for maintenance, assembly, and storage.



## INCLUDING FREE BUILD BOOK

- ✓ Technical drawings & calculations
- ✓ Complies with EN13782



Discover more about this product at [kroftman.com](https://kroftman.com)



10

10-year  
warranty



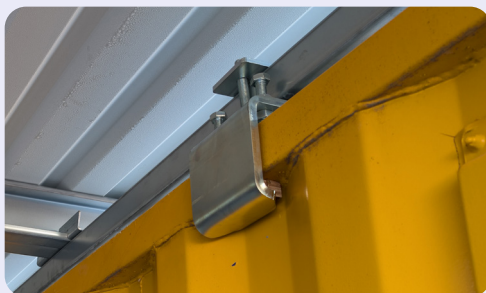
Quick  
assembly



4 & 6  
meters



All  
weather



## PROJECTS

# OUR CLIENTS

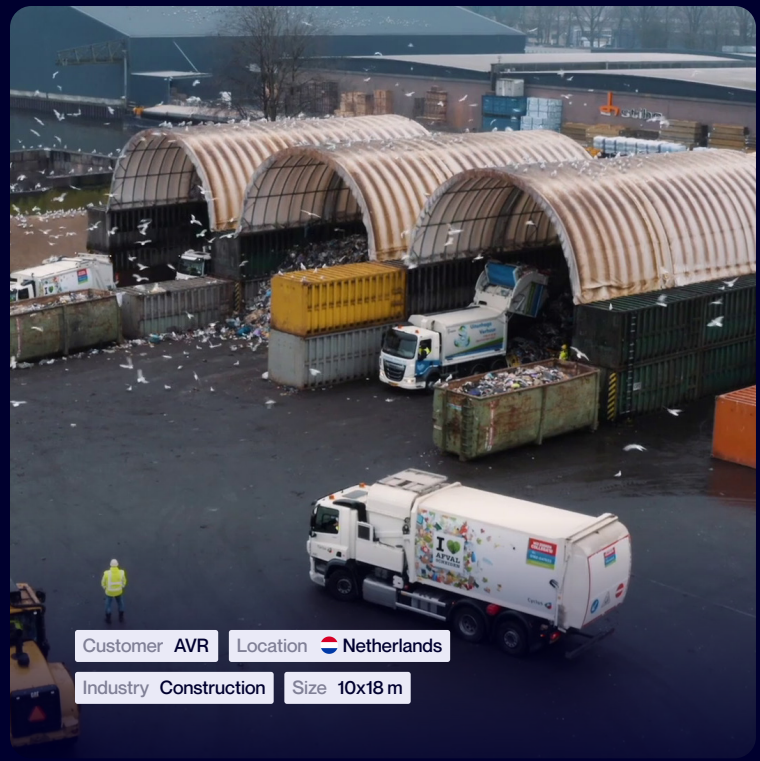
The applications demonstrate how versatile the system is. Across a wide range of industries – from construction and industry to waste, recycling, and agriculture – it consistently provides practical solutions for workspaces and storage.

The modular design makes it possible to configure the right setup for each situation. At the same time, all structures comply with European standards, ensuring that every solution is not only functional, but also technically sound and suited to the specific requirements of each industry.





Customer Bergmenngruppe Location 🇩🇪 Hamburg  
Industry Sports & events Size 10x12 m



Customer AVR Location 🇳🇱 Netherlands  
Industry Construction Size 10x18 m




# CONTAINER SHELTER

Customer Imar infra Location 🇳🇱 Rotterdam Industry Construction Size 6x6 m

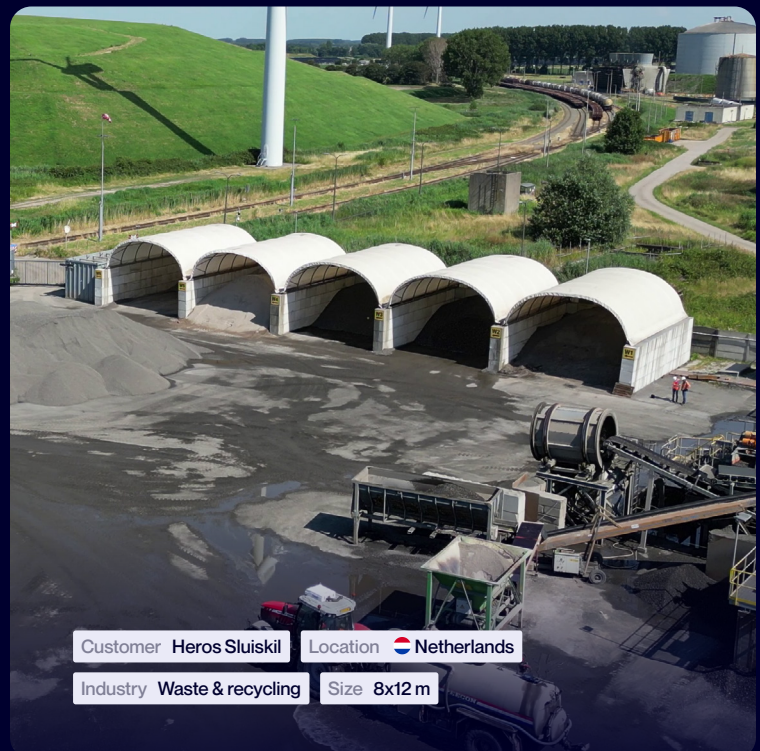
# BUNKERSILO SHELTER

Location  Belgium Industry Waste & recycling Size 10x12 m



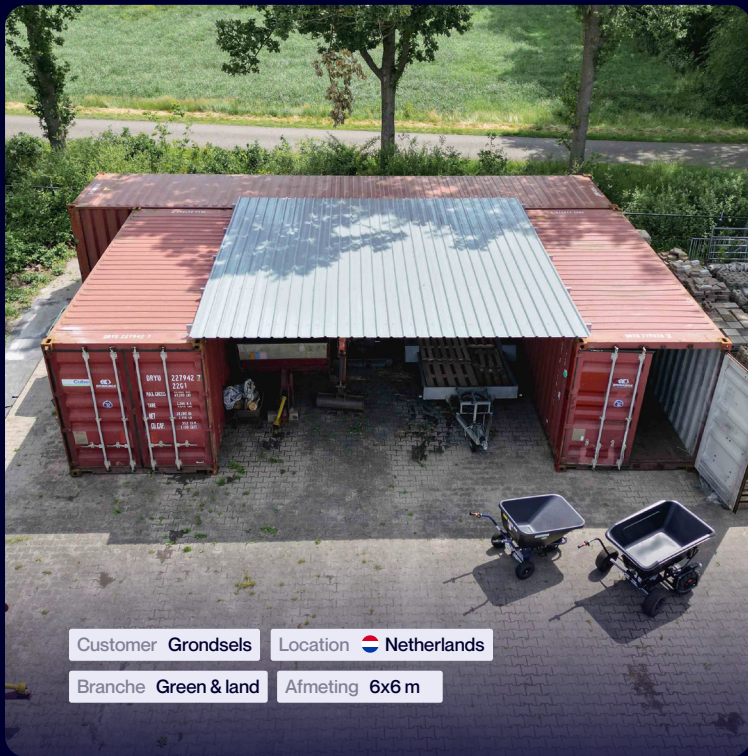
Customer Versluys en zoon Location  Netherlands

Industry Construction Size 8x12 m



Customer Heros Sluiskil Location  Netherlands

Industry Waste & recycling Size 8x12 m



Customer Grondsels Location  Netherlands

Branche Green & land Afmeting 6x6 m



Location  Netherlands

Industry Other Size 4x6 m



# WORKBOX

Customer Jan de Nul Location  Netherlands Industry Industry & mining Size 6x6 m

# POPULAR PRODUCTS

Our most popular products offer flexible and reliable solutions for any situation. From compact workspaces to robust shelters for heavy-duty conditions: thanks to the modular system, they are quick to assemble and efficient in use.

Container shelter 6x6 m  
saddle roof with back wall

Fastening brackets

White PE 300 g/m<sup>2</sup>

€ 2.330,00 excl. VAT

Container shelter 6x6 m  
saddle roof with side wall

Mounting beam

White PE 300 g/m<sup>2</sup>

€ 2.490,00 excl. VAT

Container shelter 6x12 m  
saddle roof with top- and back wall

Fastening brackets

White PVC 610 g/m<sup>2</sup>

€ 4.930,00 excl. VAT

Container shelter 10x12 m  
arch roof with back wall

Fastening brackets

White PVC 610 g/m<sup>2</sup>

€ 9.220,00 excl. VAT

Bunkersilo shelter 10x12 m  
arch roof with top wall

Concrete anchors

Grey PVC 610 g/m<sup>2</sup>

€ 8.062,00 excl. VAT

Bunkersilo shelter 15x12 m  
arch roof with top wall

Concrete anchors

Grey PVC 610 g/m<sup>2</sup>

€ 16.589,00 excl. VAT

## SHELTERS FOR HEAVY WIND AND SNOW LOADS

On industrial sites, in ports and at offshore locations, structures must withstand heavy weather conditions. That is why our shelters are engineered for combined wind and snow loads. For locations with higher loads, a reinforced version is available: the PLUS version.



## SMALL SHELTERS FOR WORKSPACES

Not every situation requires a storage solution. For smaller tasks, maintenance or assembly, a compact shelter is sufficient. This creates a dry workspace where tools and components remain protected during work.



## INSTALLATION ON CONCRETE WALLS AND CONTAINERS

Many industrial sites already have concrete walls or container setups for storage. A shelter can be installed on both. This creates a covered workspace or storage area without the need for new foundations or major site modifications.



## EXTRA HEIGHT WITH STACKED CONTAINERS

Sometimes extra height is needed for machinery, components or maintenance work. By stacking containers, the shelter can be installed at a greater height. This creates more working space under the shelter while keeping the base structure the same.



# THAT'S WHY WE'RE THE **SPECIALIST**

# DRIVEN BY **INNOVATION,** INSPIRED BY POSSIBILITY

For over 20 years, we have been designing and manufacturing shelters for a wide range of applications. Every structure is engineered, tested, and complies with all European standards. We design our solutions for maximum flexibility, in all conditions. Reliable, durable, and ready for immediate use.

## **QUALITY & CONFORMITY**

Safety and quality come first. Our shelters are designed in accordance with the EN13782 standard and supplied with a construction dossier; all structural drawings and calculations are available free of charge.

## **ENDLESS POSSIBILITIES**

Whether it concerns protecting machinery, storing bulk materials or creating a workspace: our modular shelters offer highly versatile and flexible solutions.

## **CLEVER, MADE EASY**

Smart and practical designs that are easy to use. With our modular system and flexible options, we create a shelter that perfectly fits your needs and situation.



# FAQ'S

---

## **WHAT ARE THE PAYMENT TERMS?**

For orders with a value under €5,000, we require 100% prepayment. For higher-value orders, it is possible to pay 50% in advance and the remaining 50% upon delivery. Payment on account is possible once a positive credit assessment has been completed. For this, we work together with Allianz Trade.

## **CAN I ORDER INDIVIDUAL PARTS IF SOMETHING BREAKS ON MY SHELTER?**

Yes, it is possible to order individual parts if something breaks on your shelter. In most cases, damage can be repaired by replacing parts. We offer these parts in sets. You can download an overview of these parts on our website. Not sure which solution you need? Feel free to contact us.

## **WHAT DOES THE EN13782 STANDARD MEAN FOR MY CONTAINER SHELTER?**

The European EN13782 standard sets requirements for the design and construction of temporary structures, such as container shelters. This standard ensures that the shelter is safe and stable, even under changing weather conditions. It includes specifications for materials, as well as calculations for wind and snow loads, stability checks and strength.

Our products are designed and tested according to this standard. This means you are assured of a safe and reliable shelter that complies with European guidelines.

## **MY ORDER HAS BEEN DELIVERED, HOW CAN I CHECK IF IT IS COMPLETE?**

Use the included packing list to verify the contents of your order. If you have any doubts about whether everything is included, please contact us.

## **WHAT IS THE DELIVERY TIME FOR THE SHELTER?**

Our warehouse in Babberich has a large stock of shelters, allowing us to process orders quickly. Once your order is approved and payment is received, we usually deliver within two working days to our transport partner. This results in a delivery time of approximately one week within the Netherlands, and one to two weeks for deliveries to Germany.

## **CAN I ASSEMBLE A KROFTMAN PRODUCT MYSELF WITHOUT EXPERIENCE?**

Yes, that is certainly possible. One of the advantages of Kroftman is that our products are designed for easy self-assembly. This can significantly reduce costs. Usually, only standard tools, one or two ladders or a small forklift and a few extra hands are required. For larger shelters (H800 and wider), the frames become heavier and appropriate lifting equipment is required (for example a forklift or a crane). Our detailed manuals guide you step by step through the entire assembly process. For trouble-free installation, we also recommend reviewing the assembly conditions in advance.

## **DO I NEED A BUILDING PERMIT?**

That depends on the product and the local regulations. A permit is usually not necessary for temporary placement. For (semi) permanent placements, it's best to contact your municipality.

You can download the construction drawings to apply for a building permit. Upon request we can also supply the structural calculations entirely free of charge and obligation.

# NEED ADVICE?

Our product specialists are happy to help you  
choose the right solution for your situation.

✉ [sales@kroftman.com](mailto:sales@kroftman.com)

☎ +31 26 700 9 700

  
WE'VE GOT  
YOU COVERED

